

目錄索引 Contents

減速機的工作系數和安裝注意事項 Service factor & Installation notice	2
蝸輪減速機 Worm geared motors and worm gear units	4
輸入法蘭盤尺寸 Input flange Dimensions	6
蝸桿、蝸輪效率表 Mesh data	7
NMRV性能參數 NMRV Performance	8
NRV性能參數 NRV Performance	18
NMRV/NRV型號標記 NMRV/NRV Model & marker	20
NMRV外形尺寸 NMRV Dimensions	24
NRV外形尺寸 NRV Dimensions	34
NMRV英制系列 NMRV Inch series	36
PC-NMRV型號標記 PC-NMRV Model & marker	40
PC-NMRV組合方式 PC-NMRV Combinations	41
PC-NMRV外形尺寸 PC-NMRV Dimensions	43
NMRV-NMRV型號標記 NMRV-NMRV Model & marker	46
NMRV-NMRV參數表 NMRV-NMRV Parameter table	48
NMRV-NMRV外形尺寸 NMRV-NMRV Dimensions	49
NRV-NMRV外形尺寸 NRV-NMRV Dimensions	52
PAM- B5,B14 外形尺寸 PAM -B5,B14 Dimensions for B5,B14 moder	53
無段變速機/結構分結圖 Variator / Structural breakdown drawing	54
型號標記 Model & marker	55
安裝方式 Mounting	56
油量表 Choice of lubricant	56
B3,B5 外形尺寸 Dimensions for B3,B5 model	57
馬達尺寸與特性 Dimensions for motor	58

參數符號對應表 Parameter & symbol contrast table

P = 功率Power (kW)	η = 效率Efficiency	a = 軸向Axial
M = 扭力Torque (Nm)	γ = 前置角Helix angle	s = 靜態Statical
n = 速度Speed (rpm)	f.s.= 工作系數Service factor	d = 動態Dynamic
i = 減速比Ratio	1 = 輸入軸Input shaft	max = 最大值
F = 負荷Load (N)	2 = 輸出軸Output shaft	min = 最小值
m = 重量Weight (kg)	r = 徑向Radial	

減速機的工作系數 Service factor

減速機的工作系數(f.s.)主要取決於減速機的運作條件，其決定因素為：

1. 減速機的負荷形式：A—B—C
2. 工作時間：小時 / 天(Δ)
3. 開機頻率：次 / 小時(★)

減速機的三種負荷形式：

1. A：均等負荷 $f_a \leq 0.3$
2. B：中等負荷 $f_a \leq 3$
3. C：重量負荷 $f_a \leq 10$

$$F_a = J_e / J_m$$

- $J_e(\text{kgm}^2)$ ：在馬達軸心上的外圍轉動慣量
- $J_m(\text{kgm}^2)$ ：馬達的轉動慣量

注意： $f_a > 10$ 時請與技術服務部聯繫

The service factor(f.s.)depends on the operating conditions the gearbox is subjected to. Following parameters need to be take to select the right service factor.

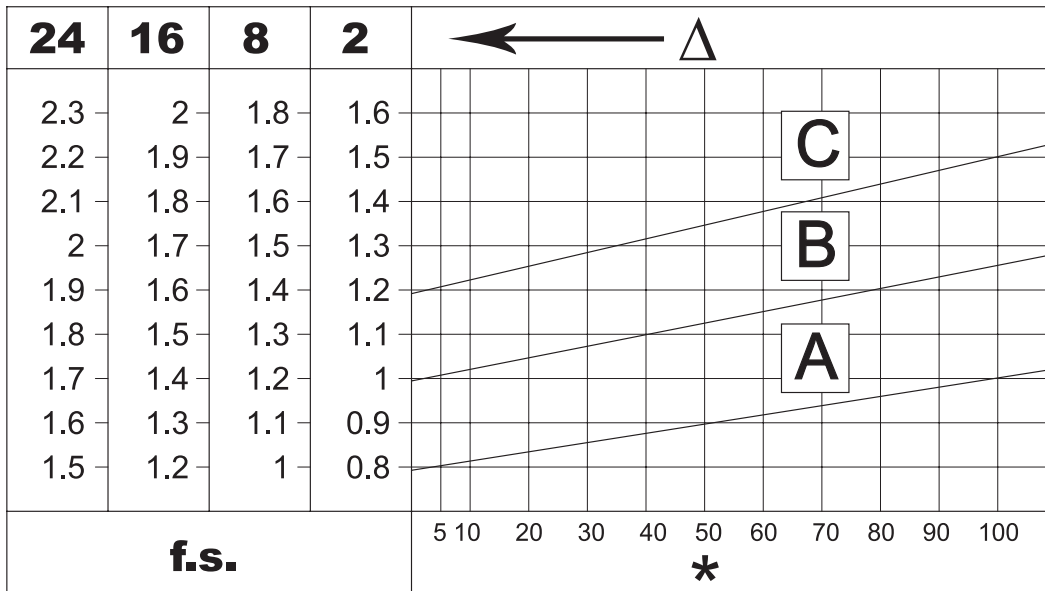
1. type of load of the operating machine A - B - C
2. length of daily operating time: hours/day(Δ)
3. start-up frequency: starts/hour (★)

TYPE OF LOAD:

1. A-uniform, $f_a \leq 0.3$
2. B-moderate shocks, $f_a \leq 3$
3. C-heavy shocks, $f_a \leq 10$

$$F_a = J_{ex} / J_m$$

- $J_{ex}(\text{kgm}^2)$ moment of the external inertia reduced at the drive shaft.
- $J_m(\text{kgm}^2)$ moment of inertia of motor.

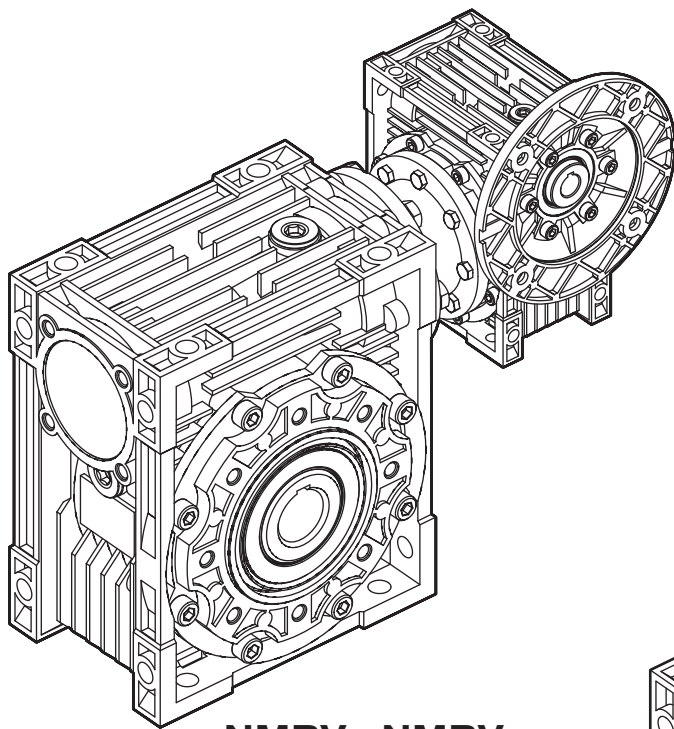


安裝注意事項

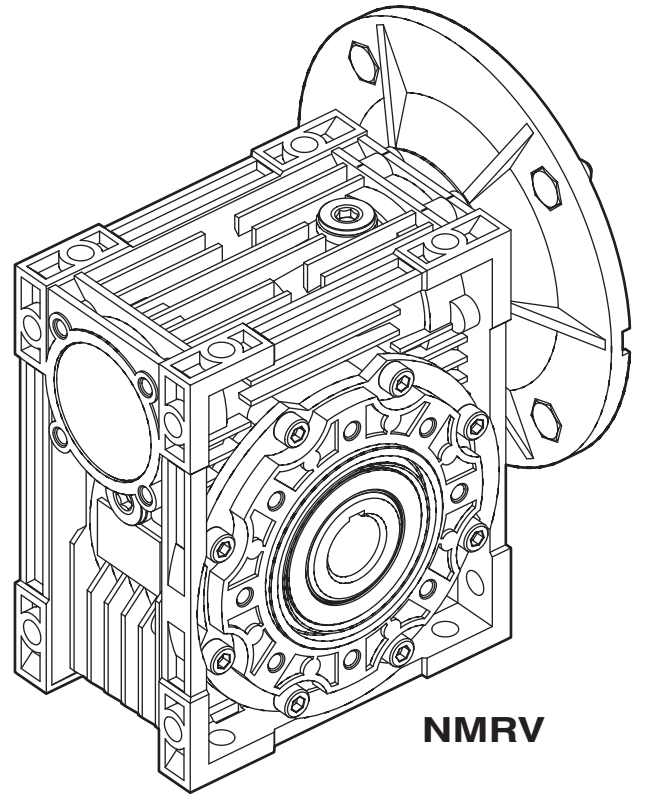
To install the reduction unit it is necessary to note the following recommendations

- 減速機要平穩安裝，避免震動。
- 與機器裝配前，請檢查減速機的輸出軸的旋轉方向是否正確。
- 在減速機放置時間長達4~6個月情況下，應檢查密封圈是否因不浸潤在潤滑油中而與軸發生粘連或失去彈性，必要時更換密封圈。
- 安裝空心軸時，應採用專用力矩扳手。如果無該條件時，用戶可自行選用專用工具，但應確保軸向不受力，減速機可自由移動。
- 減速機應避免受日光直射和雨淋。
- 確保通風條件良好。
- 工作環境溫度低於-5° 或高於40° 時，請諮詢技術服務部。
- 皮帶盤,齒輪,聯軸器,軸等通過特殊螺紋孔裝于實心軸或空心軸,該螺紋孔可防止運作時損傷軸承和機件表面,應對機件表面作適當潤滑,以防鏽蝕和卡塞。
- 橡膠件和透氣孔不可上油漆。
- 安裝完畢後，取出油孔上的封口栓塞，換上透氣栓塞。
- 檢查油位高度。
- 如果減速機不連接電機時，請參考以下注意事項以確保正確連接：安裝於B5，B14
- 檢查軸與電機法蘭之公差是否符合基本標準。
- 清洗軸、中心孔和法蘭表面的汙跡及油漆。
- 安裝時避免減速機受力。
- 檢查馬達鍵槽的位置和偏差。
- 用潤滑油塗抹軸的表面，以防生鏽或卡塞。
- 開機時應分級起動，不能滿負荷起動。
- 裝配在電機下方的機件及材料易於受損，應採取適當的防範措施。
- The mounting on the machine must be stable to avoid any vibration.
- Check the correct direction of rotation of the reduction unit output shaft before fitting the unit to the machine.
- In the case of particularly lengthy of periods of storage (4-6 months) if the oil seal is not immersed in the lubricant inside recommended to change it since the rubber could stick to the shaft or even has lost the elasticity it needs to function properly
- For a shaft mounting, for reduction units with a hollow output shafts, use the torque arms motionclinic can supply. If it is n make sure that the constraint is axially free and with such as play as to ensure free movement to the reduction unit.
- Whenever possible, protect the reduction unit against solar radiation and bad weather.
- Ensure the motor cools correctly by assuring good passage of air from the fan side.
- In the case of ambient temperatures <-5° C and >+40° C contact motionclinic.
- The various parts (pulleys, gear wheels, couplings, shafts, etc.) must be mounted on the solid or hollow shafts using special holes or other systems that anyhow ensure correct operation without risking damage to the bearings or external parts of the unit
- Painting must definitely not go over rubber parts and the holes on the breather plugs, if there are any.
- Taking out the seal embolism of the oilhole.
- Check the height of the oil level.
- Supposing the gear unit have not coupled with the motor, please pay attention to the following items to make sure rightly connection. Mounting to B5, B14
- Check whether the tolerance between the shaft and motor flange fit for the essential standard.
- Washing the dirt and the paint on the surfaces of the shaft, center bore and the flange.
- Mounting avoid the gear unit incur strength .
- Check the position and the decination of the motor keyslot.
- Lubricate the surfaces in contact to avoid seizure or oxidation.
- Starting must take place gradually, without immediately applying the maximum load.
- When there are parts objects or materials under the motor drive that can be damaged by even limited spillage of oil, special should be fitted.

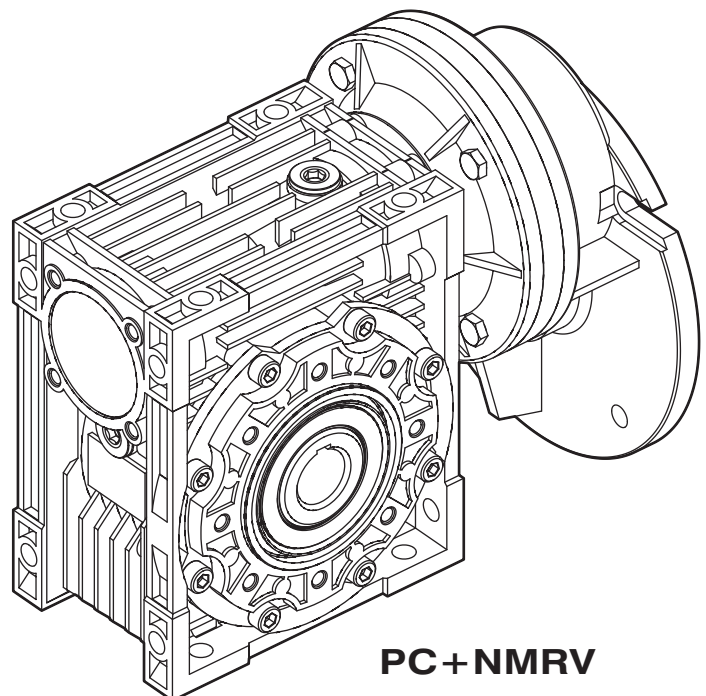
蝸輪減速機 Worm geared motors and worm gear units



NMRV+NMRV

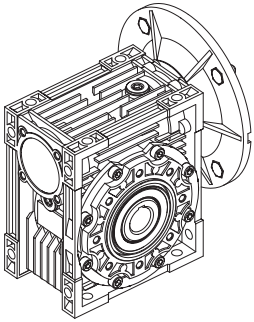
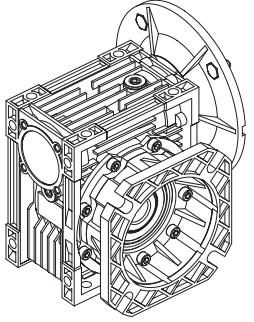
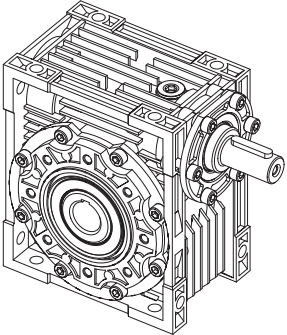
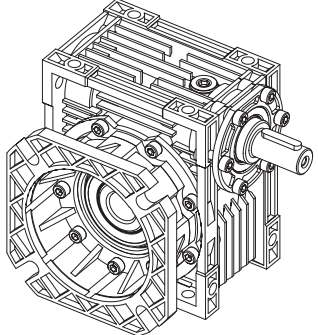
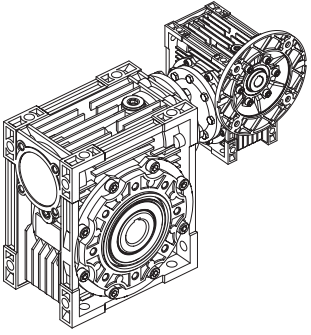
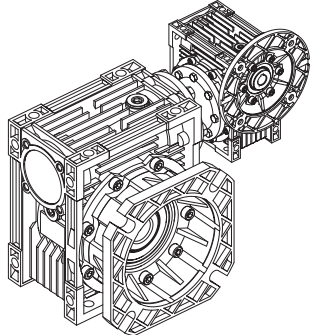
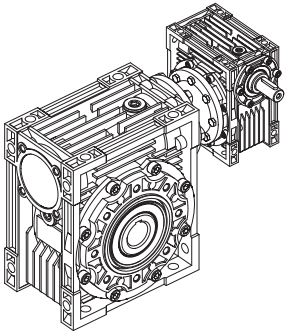
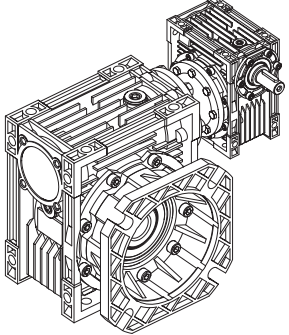
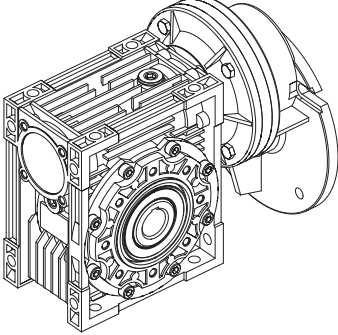
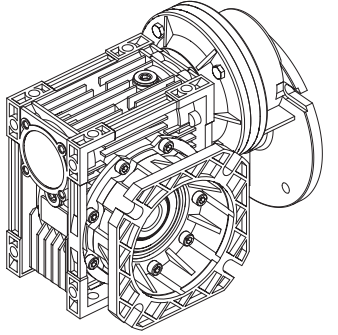


NMRV

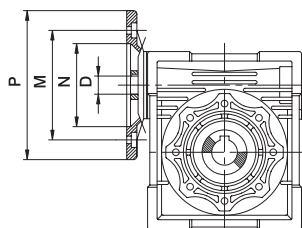


PC+NMRV

蝸輪減速機型號 Versions

	<p>NMRV 025-150</p>	<p>NMRV 025-150 F</p>	
	<p>NRV 025-150</p>	<p>NRV 025-150 F</p>	
	<p>NMRV-NMRV 025-130</p>	<p>NMRV-NMRV 025-130 F</p>	
	<p>NRV-NMRV 025-130</p>	<p>NRV-NMRV 025-130 F</p>	
	<p>PC-NMRV 063/040-090/130</p>	<p>PC-NMRV 063/040-090/130 F</p>	

輸入法蘭盤尺寸 Input flange Dimensions



NMRV	PAM IEC	P	M	N	D											
					5	7.5	10	15	20	25	30	40	50	60	80	100
025	56B14	80	65	50	9	9	9	9	9	-	9	9	9	9	-	-
030	63B5	140	115	95	11	11	11	11	11	11	11	11	11	-	-	-
	63B14	90	75	60	9	9	9	9	9	9	9	9	9	9	9	-
	56B5	120	100	80	-	-	-	-	-	-	-	-	9	9	9	9
	56B14	80	65	50	14	14	14	14	14	14	14	14	-	-	-	-
040	71B5	160	130	110	11	11	11	11	11	11	11	11	11	11	11	11
	71B14	105	85	70	-	-	-	-	-	-	-	-	9	9	9	9
	63B5	140	115	95	-	-	-	-	-	-	-	-	11	11	11	11
	63B14	90	75	60	19	19	19	19	19	19	19	-	-	-	-	-
050	56B5	120	100	80	14	14	14	14	14	14	14	14	14	14	14	-
	80B5	200	165	130	-	-	-	-	-	-	-	-	11	11	11	11
	80B14	120	100	80	-	-	-	-	-	-	-	-	14	14	14	14
	71B5	160	130	110	-	-	-	-	-	-	-	-	11	11	11	11
063	71B14	105	85	70	-	-	-	-	-	-	-	14	14	14	14	14
	90B5	200	165	130	-	24	24	24	24	24	24	-	-	-	-	-
	90B14	140	115	95	-	19	19	19	19	19	19	19	19	19	-	-
	80B5	200	165	130	-	-	-	-	-	-	-	-	14	14	14	14
	80B14	120	100	80	-	-	-	-	-	-	-	-	14	14	14	14
	71B5	160	130	110	-	-	-	-	-	-	-	-	14	14	14	14
075	71B14	105	85	70	-	-	-	-	-	-	-	-	14	14	14	14
	100/112B5	250	215	180	-	28	28	28	-	-	-	-	-	-	-	-
	100/112B14	160	130	110	-	24	24	24	24	24	24	24	-	-	-	-
	90B5	200	165	130	-	-	-	-	19	19	19	19	19	19	19	19
	90B14	140	115	95	-	-	-	-	-	-	-	-	14	14	14	14
	80B5	200	165	130	-	-	-	-	-	-	-	-	14	14	14	14
	80B14	120	100	80	-	-	-	-	-	-	-	-	19	19	19	19
090	71B5	160	130	110	-	-	-	-	-	-	-	-	14	14	14	14
	100/112B5	250	215	180	-	28	28	28	28	28	28	-	-	-	-	-
	100/112B14	160	130	110	-	24	24	24	24	24	24	24	24	24	-	-
	90B5	200	165	130	-	-	-	-	-	-	-	-	19	19	19	19
	90B14	140	115	95	-	-	-	-	-	-	-	-	19	19	19	19
	80B5	200	165	130	-	-	-	-	-	-	-	-	19	19	19	19
110	80B14	120	100	80	-	-	-	-	-	-	-	-	19	19	19	19
	132B5	300	265	230	-	38	38	38	38	-	-	-	-	-	-	-
	100/112B5	250	215	180	-	28	28	28	28	28	28	28	28	28	-	-
	90B5	200	165	130	-	-	-	-	-	24	24	24	24	24	24	24
130	80B5	200	165	130	-	-	-	-	-	-	-	-	-	-	19	19
	132B5	300	265	230	-	38	38	38	38	38	38	38	-	-	-	-
	100/112B5	250	215	180	-	-	-	-	-	28	28	28	28	28	28	28
150	90B5	200	165	130	-	-	-	-	-	-	-	-	-	-	24	24
	160B5	350	300	250	-	42	42	42	42	42	-	-	-	-	-	-
	132B5	300	265	230	-	-	-	-	38	38	38	38	38	38	-	-
150	100/112B5	250	215	180	-	-	-	-	-	-	-	-	28	28	28	28

蝸桿、蝸輪效率表 Mesh data

NRV	i	5	7.5	10	15	20	25	30	40	50	60	80	100
025	Z1	4	4	3	2	2		1	1	1	1		
	γ	30° 57'	25° 18'	19° 31'	13° 18'	10° 53'		6° 44'	5° 29'	4° 34'	3° 56'		
	mx	1.8	1.3	1.3	1.3	1		1.3	1	0.8	0.67		
	η_d	0.86	0.84	0.82	0.78	0.74		0.66	0.61	0.57	0.54		
	η_s	0.71	0.70	0.67	0.60	0.55		0.46	0.41	0.36	0.34		
030	Z1	4	4	3	2	2	1	1	1	1	1	1	
	γ	21° 48'	18° 50'	14° 21'	9° 40'	7° 44'	5° 34'	4° 52'	3° 53'	3° 11'	2° 46'	2° 07'	
	mx	2	1.44	1.44	1.44	1.1	1.7	1.44	1.1	0.88	0.75	0.56	
	η_d	0.86	0.84	0.81	0.76	0.72	0.67	0.64	0.58	0.54	0.50	0.44	
	η_s	0.71	0.66	0.62	0.54	0.50	0.43	0.39	0.35	0.31	0.27	0.23	
040	Z1	4	4	4	2	2	2	1	1	1	1	1	1
	γ	27° 24'	21° 48'	17° 31'	11° 18'	8° 58'	7° 41'	5° 42'	4° 30'	3° 51'	3° 17'	2° 32'	2° 05'
	mx	2.8	2	1.5	2	1.5	1.25	2	1.5	1.25	1.04	0.78	0.63
	η_d	0.88	0.86	0.85	0.81	0.77	0.74	0.69	0.64	0.61	0.57	0.51	0.47
	η_s	0.72	0.69	0.65	0.58	0.53	0.5	0.44	0.4	0.36	0.32	0.28	0.24
050	Z1	4	4	4	2	2	2	1	1	1	1	1	1
	γ	23° 49'	21° 48'	17° 42'	11° 18'	9° 04'	7° 36'	5° 42'	4° 33'	3° 49'	3° 17'	2° 33'	2° 04'
	mx	3.4	2.5	1.9	2.5	1.9	1.54	2.5	1.9	1.54	1.3	0.98	0.78
	η_d	0.87	0.86	0.84	0.8	0.77	0.74	0.7	0.65	0.61	0.57	0.51	0.49
	η_s	0.73	0.69	0.65	0.58	0.54	0.5	0.44	0.39	0.35	0.32	0.27	0.23
063	Z1		4	4	2	2	2	1	1	1	1	1	1
	γ		24° 31'	20° 19'	12° 50'	10° 29'	8° 44'	6° 30'	5° 17'	4° 23'	3° 47'	2° 59'	2° 25'
	mx		3.25	2.5	3.25	2.5	2	3.25	2.5	2	1.68	1.28	1.02
	η_d		0.87	0.86	0.82	0.8	0.77	0.73	0.69	0.65	0.61	0.56	0.5
	η_s		0.7	0.65	0.59	0.54	0.5	0.45	0.4	0.36	0.33	0.28	0.24
075	Z1		4	4	2	2	2	1	1	1	1	1	1
	γ		26° 33'	21° 48'	14° 02'	11° 18'	9° 37'	7° 07'	5° 42'	4° 50'	4° 05'	3° 15'	2° 40'
	mx		4	3	4	3	2.45	4	3	2.45	2	1.54	1.24
	η_d		0.88	0.87	0.84	0.81	0.79	0.75	0.71	0.68	0.64	0.59	0.54
	η_s		0.7	0.67	0.6	0.57	0.52	0.46	0.42	0.38	0.35	0.29	0.26
090	Z1		4	4	2	2	2	1	1	1	1	1	1
	γ		28° 20'	23° 26'	15° 05'	12° 14'	10° 37'	7° 40'	6° 11'	5° 21'	4° 36'	3° 36'	2° 57'
	mx		4.8	3.6	4.8	3.6	3	4.8	3.6	3	2.5	1.88	1.5
	η_d		0.89	0.88	0.85	0.83	0.81	0.77	0.74	0.71	0.68	0.62	0.58
	η_s		0.72	0.69	0.63	0.59	0.55	0.49	0.45	0.41	0.38	0.32	0.28
110	Z1		4	4	2	2	2	1	1	1	1	1	1
	γ		28° 17'	27° 35'	15° 03'	14° 38'	12° 37'	7° 39'	7° 26'	6° 23'	5° 31'	4° 23'	3° 38'
	mx		5.89	4.6	5.89	4.6	3.75	5.89	4.6	3.75	3.12	2.36	1.9
	η_d		0.89	0.88	0.85	0.84	0.83	0.78	0.77	0.74	0.71	0.66	0.62
	η_s		0.71	0.68	0.62	0.61	0.58	0.48	0.48	0.44	0.41	0.36	0.32
130	Z1		4	4	2	2	2	1	1	1	1	1	1
	γ		28° 46'	26° 15'	15° 21'	13° 51'	11° 49'	7° 48'	7° 01'	5° 58'	5° 12'	4° 05'	3° 25'
	mx		7	5.4	7	5.4	4.37	7	5.4	4.37	3.68	2.75	2.24
	η_d		0.9	0.88	0.86	0.85	0.83	0.79	0.77	0.74	0.71	0.67	0.63
	η_s		0.71	0.68	0.62	0.6	0.57	0.49	0.46	0.43	0.39	0.34	0.3
150	Z1		6	4	3	2	2	2	1	1	1	1	1
	γ		32° 09'	24° 35'	17° 27'	12° 53'	11° 19'	9° 50'	6° 32'	5° 43'	4° 57'	3° 55'	3° 14'
	mx		5.5	6,155	5.5	6,155	5	4,193	6,155	5	4,193	3,17	2,55
	η_d		0.91	0.9	0.88	0.86	0.84	0.83	0.78	0.76	0.73	0.68	0.64
	η_s		0.73	0.71	0.66	0.6	0.57	0.54	0.45	0.42	0.39	0.33	0.29

The helix is right-handed. $\eta_d(1400)$dynamic efficiency at $n_1=1400$ η_sstatic efficiency
i.....ratio Z1:蝸桿牙口數 γ :螺旋角 mx:模數

性能參數表 Performance

P1 (kW)	n2 (1/min)	M2 (Nm)	f.s.	i	減速機型號 Type	Fr2 (N)	頁碼 Page
0.06	280	1.8	6.2	5	NMRV025	439	24
	186.7	2.6	4.2	7.5		503	
	140	3.4	3.5	10		553	
	93.3	4.9	2.5	15		633	
	70	6.1	2	20		697	
	46.7	8.2	1.6	30		798	
	35	10	1.3	40		878	
	28	12	0.9	50		946	
	23.3	14	0.7	60	1006		
	280	1.8	10.1	5	NMRV030	597	25
	186.7	2.6	6.9	7.5		683	
	140	3.4	5.4	10		752	
	93.3	4.7	3.8	15		861	
	70	6	3	20		948	
	56	7	3	25		1021	
	46.7	8	2.5	30		1085	
	35	9.7	1.9	40		1194	
	28	11	1.5	50	1286		
	23.3	13	1.3	60	1367		
	17.5	14	0.9	80	1504		
	14	25.1	1.3	100	NMRV025/030	1620	48
	9.3	32	0.9	150		1830	
	7	41	0.7	200		1830	
	5.6	44	0.8	250		1830	
4.7	59.1	1.2	300	NMRV025/040	3490	48	
3.5	71	0.9	400		3490		
2.8	82	0.7	500		3490		
2.3	101	0.6	600		3490		
1.9	116	0.5	750		3490		
1.6	143	0.5	900		3490		
1.2	171	0.4	1200		3490		
0.9	197	0.3	1500		3490		
0.8	217	0.3	1800		3490		
0.6	268	0.2	2400		3490		
0.5	324	0.2	3000		3490		
0.4	294	0.1	4000		3490		
0.3	356	0.1	5000	3490			
4.7	57.4	1.3	300	NMRV030/040	3490	48	
3.5	70	0.9	400		3490		
2.8	96	0.6	500		3490		
2.3	104	0.7	600		3490		
1.9	121	0.6	750		3490		
1.6	139	0.5	900		3490		
1.2	166	0.4	1200		3490		
0.9	196	0.4	1500		3490		
0.8	218	0.3	1800		3490		
0.58	261	0.2	2400		3490		
0.4	300	0.2	3200		3490		
0.4	279	0.1	4000		3490		
0.28	338	0.1	5000	3490			
1.6	141.3	1	900	NMRV030/050	4840	49	
1.2	169	0.7	1200		4840		
0.93	199	0.7	1500		4840		
0.78	222	0.7	1800		4840		
0.6	266	0.5	2400		4840		
0.5	307	0.4	3000		4840		
0.35	288	0.3	4000		4840		
0.29	311	0.3	4800		4840		

性能參數表 Performance

P1 (kW)	n2 (1/min)	M2 (Nm)	f.s.	i	減速機型號 Type	Fr2 (N)	頁碼 Page		
0.06	0.9	203.5	1.1	1500	NMRV030/063	6270	49		
	0.78	225	0.9	1800		6270			
	0.58	276	0.8	2400		6270			
	0.47	319	0.7	3000		6270			
	0.35	306	0.6	4000		6270			
	0.28	360	0.4	5000		6270			
	0.6	330.4	1.1	2400	NMRV040/075	7380	49		
	0.47	377	0.8	3000		7380			
	0.35	355	0.7	4000		7380			
	0.28	419	0.5	5000		7380			
	0.5	405.9	1.4	3000	NMRV040/090	8180	50		
	0.35	365	1.3	4000		8180			
0.28	431	1	5000	8180					
0.09	280	2.7	4.1	5	NMRV025	439	24		
	186.7	3.9	2.8	7.5		503			
	140	5.1	2.4	10		553			
	93.3	7.3	1.6	15		633			
	70	9.2	1.3	20		697			
	46.7	12	1.1	30		798			
	35	15	0.9	40	878				
	280	2.7	6.7	5	NMRV030	597	25		
	186.7	3.9	4.6	7.5		683			
	140	5	3.6	10		752			
	93.3	7.1	2.5	15		861			
	70	9	2	20		948			
	56	10	2	25		1021			
	46.7	12	1.7	30		1085			
	35	14	1.2	40		1194			
	28	17	1	50		1286			
	23.3	19	0.9	60		1367			
	14	37.7	0.8	100		NMRV025/030		1620	48
	9.3	49	0.6	150				1830	
	7	62	0.5	200	1830				
	5.6	66	0.5	250	1830				
	4.7	75	0.4	300	1830				
	3.5	107	0.3	400	1830				
	2.8	115	0.3	500	1830				
	2.3	135	0.2	600	1830				
	1.9	151	0.2	750	1830				
	1.6	178	0.2	900	1830				
	1.2	212	0.1	1200	1830				
	0.9	247	0.1	1500	1830				
	0.78	304	0.1	1800	1830				
	0.58	340	0.1	2400	1830				
	0.47	405	0.1	3000	1830				
	28	19	2	50	NMRV040	2475	26		
	23.3	21	1.7	60		2630			
	17.5	26	1.3	80		2895			
	14	29	1	100		3118			
	4.7	87.6	0.8	300	NMRV030/040	3490	48		
	3.5	106.7	1.2	400	NMRV030/050	4840	49		
	2.8	123	1	500		4840			
	2.3	159	0.9	600		4840			
	1.9	185	0.8	750		4840			
	1.6	212	0.7	900		4840			
1.6	200	1	900	6270					
1.2	263	0.9	1200	NMRV030/063	6270	49			
0.93	305	0.7	1500		6270				

性能參數表 Performance

P1 (kW)	n2 (1/min)	M2 (Nm)	f.s.	i	減速機型號 Type	Fr2 (N)	頁碼 Page
0.09	0.9	359.7	1.1	1500		7380	
	0.78	404	1	1800	NMRV040/075	7380	49
	0.58	496	0.7	2400		7380	
	0.5	608.9	0.9	3000		8180	
	0.35	548	0.8	4000	NMRV040/090	8180	50
0.12	280	3.6	5.1	5		597	
	186.7	5.2	3.4	7.5		683	
	140	6.7	2.7	10		752	
	93.3	9.5	1.9	15		861	
	70	12	1.5	20	NMRV030	948	25
	56	14	1.5	25		1021	
	46.7	16	1.3	30		1085	
	35	19	0.9	40		1194	
	28	23	0.8	50		1286	
	46.7	17.2	2.6	30		2087	
	35	21	1.9	40		2298	
	28	25	1.5	50	NMRV040	2475	26
	2.3	28	1.3	60		2630	
	17.5	34	1	80		2895	
	14	38	0.8	100		3118	
	19.1	41.5	1.2	73.3		2833	
	15.9	45	1.2	88		3011	
	11.9	56	0.9	117.3	PC063+NMRV040	3314	42
	9.5	64.6	0.7	146.7		3490	
	7.9	73	0.6	176		3490	
	23.3	29	2.3	60		3610	
	17.5	35	1.9	80	NMRV050	3973	27
	14	40	1.4	100		4280	
	9.5	66	1.3	146.7		4840	
	7.9	74	1.1	176		4840	
	6.0	85	0.8	234.6	PC063+NMRV050	4840	42
	4.8	96	0.7	293.3		4840	
	4.7	118.8	1.2	300		4840	
	3.5	142	0.9	400	NMRV030/050	4840	49
	2.8	164	0.7	500		4840	
	6.0	89	1.5	234.6		6270	
	4.8	101	1.2	293.3	PC063+NMRV063	6270	42
	2.8	171.2	1.3	500		6270	
2.3	208	1.1	600	NMRV030/063	6270	49	
1.9	241	0.9	750		6270		
1.6	324.9	1.2	900		7370		
1.2	399	0.9	1200	NMRV040/075	7380	49	
0.8	546.6	0.9	1800		8180		
0.58	695	0.9	2400	NMRV040/090	8180	50	
0.5	883.8	1.2	3000		10320		
0.35	784	1	4000	NMRV050/110	10320	50	
0.28	928	0.8	5000		10320		
0.18	280	5.3	3.4	5		597	
	186.7	7.8	2.3	7.5		683	
	140	10	1.8	10		752	
	93.3	14	1.3	15		861	
	70	18	1	20	NMRV030	948	25
	56	21	1	25		1021	
	46.7	24	0.8	30		1085	
	70	19.2	2	20		1824	
	56	23	1.7	25		1964	
	46.7	26	1.7	30	NMRV040	2087	26
	35	32	1.3	40		2298	

性能參數表 Performance

P1 (kW)	n2 (1/min)	M2 (Nm)	f.s.	i	減速機型號 Type	Fr2 (N)	頁碼 Page
0.18	28	38	1	50	NMRV040	2475	26
	23.3	43	0.8	60		2630	
	19.1	62	0.8	73.3	PC063+NMRV040	2833	42
	15.9	69	0.8	88		3011	
	11.9	84	0.6	117.3		3314	
	35	32.9	2.3	40		3153	
	28	39	1.9	50	NMRV050	3397	27
	23.3	43	1.6	60		3610	
	17.5	52	1.2	80		3973	
	14	60	0.9	100		4280	
	19.1	62	1.4	73.3	PC063+NMRV050	3889	42
	15.9	70	1.5	88		4132	
	11.9	86	1.1	117.3		4548	
	9.5	99	0.9	146.7		4840	
	7.9	112	0.7	176		4840	
	6.0	129	0.6	234.6		4840	
	9.5	101	1.7	146.7	PC063+NMRV063	6270	42
	7.9	116	1.4	176		6270	
	6.0	135	1	234.6		6270	
	4.8	152	0.8	293.3		6270	
3.5	221.5	1	400	NMRV030/063	6270	49	
2.8	257	0.8	500		6270		
2.3	362	1.1	600	NMRV040/075	7380	49	
1.9	435	0.9	750		7380		
1.6	487	0.8	900		7380		
1.2	629.2	1	1200	NMRV040/090	8180	50	
0.93	735	0.8	1500		8180		
0.8	860.6	1.5	1800	NMRV050/110	10320	50	
0.58	1113	1.1	2400		10320		
0.22	280	6.5	2.8	5	NMRV030	597	25
	186.7	10	1.9	7.5		683	
	140	12	1.5	10		752	
	93.3	17	1	15		861	
	70	22	0.8	20		948	
	93.3	18.5	2.2	15	NMRV040	1657	26
	70	23	1.7	20		1824	
	56	28	1.4	25		1964	
	46.7	32	1.4	30		2087	
	35	39	1.1	40		2298	
	28	47	0.8	50		2475	
	28	47.3	1.5	50	NMRV050	3397	27
	23.3	53	1.3	60		3610	
	17.5	64	1	80		3973	
	19.1	76	1.2	73.3	PC063+NMRV050	3889	42
	15.9	84	1.2	88		4132	
	11.9	104	0.9	117.3		4548	
	9.5	123	1.4	146.7		6270	
	7.9	141	1.1	176		6270	
	4.7	210.5	1.1	300		NMRV030/063	
3.5	271	0.8	400	6270			
0.25	280	7.6	4.5	5	NMRV040	1149	26
	186.7	11	3.6	7.5		1315	
	140	14	2.8	10		1447	
	93.3	21	1.9	15		1657	
	70	27	1.5	20		1824	
	56	32	1.2	25		1964	
	46.7	36	1.3	30		2087	
	35	44	0.9	40		2298	

性能參數表 Performance

P1 (kW)	n2 (1/min)	M2 (Nm)	f.s.	i	減速機型號 Type	Fr2 (N)	頁碼 Page	
0.25	70	26.9	2.7	20	NMRV050	2503	27	
	56	32	2.2	25		2696		
	46.7	37	2.3	30		2865		
	35	46	1.7	40		3153		
	28	54	1.4	50		3397		
	23.3	60	1.1	60		3610		
	17.5	72	0.9	80	3973			
	19.1	86	1	73.4	PC071+NMRV050	3889	43	
	15.9	96	1.1	88.1		4132		
	11.9	119	0.8	117.5		4548		
	28	56.3	2.4	50	NMRV063	4440	28	
	23.3	63	2	60		4719		
	17.5	78	1.6	80		5193		
	14	87	1.4	100		5595		
	19.1	89	1.8	73.4	PC071+NMRV063	5083	43	
	15.9	98	2	88.1		5401		
	11.9	123	1.5	117.5		5945		
	9.5	140	1.2	146.9		6270		
	7.9	161	1	176.3		6270		
	6.0	185.6	0.7	235		6270		
4.8	211	0.6	293.8	6270				
7	159.5	1.4	400	NMRV030/063	6270	49		
5.6	185	1.2	500		6270			
17.5	81.9	2.3	80	NMRV075	6130	29		
14	94	1.9	100		6603			
9.5	148	1.7	146.9	PC071+NMRV075	7380	43		
7.9	170	1.4	176.3		7380			
6.0	195	1.1	235		7380			
4.8	225	0.9	293.8		7380			
3.5	336.3	1.1	400		7380			
2.8	384	0.8	500	NMRV040/075	7380	49		
2.3	511.8	1.2	600	NMRV040/090	8180	50		
1.9	598	0.9	750		8180			
1.6	667	0.8	900		8180			
1.2	943	1.3	1200	NMRV050/110	10320	50		
0.93	1064	1.2	1500		10320			
0.78	1195	1.1	1800		10320			
0.6	1624	1	2400	NMRV063/130	13500	50		
0.47	1935	0.8	3000		13500			
0.35	2046	0.6	4000		13500			
0.28	2430	0.5	5000		13500			
280	11.2	3	5		NMRV040		1149	26
186.7	16	2.4	7.5	1315				
140	21	1.9	10	1447				
93.3	31	1.3	15	1657				
70	39	1	20	1824				
56	47	0.8	25	1964				
46.7	53	0.8	30	2087				
140	21.7	3.3	10	NMRV050		1987	27	
93.3	31	2.4	15			2274		
70	40	1.8	20			2503		
56	48	1.5	25		2696			
46.7	55	1.5	30		2865			
35	68	1.1	40		3153			
28	80	0.9	50		3397			
23.3	89	0.8	60	3610				
35	70.7	2.1	40	NMRV063	4122	28		
28	83	1.6	50		4440			

性能參數表 Performance

P1 (kW)	n2 (1/min)	M2 (Nm)	f.s.	i	減速機型號 Type	Fr2 (N)	頁碼 Page
0.37	23.3	94	1.4	60		4719	
	17.5	115	1.1	80	NMRV063	5193	28
	14	129	0.9	100		5595	
	19.1	131	1.2	73.4		5083	
	15.9	145	1.4	88.1	PC071+NMRV063	5401	43
	11.9	182	1	117.5		5945	
	9.5	208	0.8	146.9		6270	
	23.3	98.4	2	60		5569	
	17.5	121	1.6	80	NMRV075	6130	29
	14	139	1.3	100		6603	
	19.1	135	1.8	73.4		6000	
	15.9	151	1.9	88.1		6375	
	11.9	188	1.5	117.5	PC071+NMRV075	7017	43
	9.5	218	1.1	146.9		7380	
	7.9	251	0.9	176.3		7380	
	4.7	405.5	1	300		7380	
	3.5	498	0.7	400	NMRV040/075	7380	49
	7.9	265	1.5	176.3		8180	
	6.0	312	1.1	235	PC071+NMRV090	8180	43
	4.8	363	0.9	293.8		8180	
4.7	401.8	1.5	300		8180		
3.5	523	1.2	400		8180		
2.8	611	0.9	500	NMRV040/090	8180	50	
2.3	757	0.8	600		8180		
1.9	949.5	1.3	750		10320		
1.6	1079	1.2	900		10320		
1.2	1396	0.8	1200	NMRV050/110	10320	50	
0.9	1674.1	1.1	1500		13500		
0.78	1887	0.9	1800	NMRV063/130	13500	50	
0.55	280	16.7	2	5		1149	
	186.7	24	1.6	7.5		1315	
	140	32	1.3	10	NMRV040	1447	26
	93.3	46	0.9	15		1657	
	280	16.7	3.7	5		1577	
	186.7	25	2.9	7.5		1805	
	140	32	2.2	10		1987	
	93.3	46	1.6	15		2274	
	70	59	1.2	20	NMRV050	2503	27
	56	71	1	25		2696	
	46.7	81	1	30		2865	
	70	60.8	2.2	20		3272	
	56	73	1.8	25		3524	
	46.7	83	1.9	30		3745	
	35	105	1.4	40	NMRV063	4122	29
	28	124	1.1	50		4440	
	23.3	140	0.9	60		4719	
	19.1	196	0.8	73.4		5083	
	15.9	215	0.9	88.1	PC071+NMRV063	5401	43
	35	108.1	2	40		4865	
28	129	1.6	50		5241		
23.3	146	1.4	60		5569		
17.5	180	1.1	80	NMRV075	6130	29	
14	206	0.9	100		6603		
19.1	201	1.2	73.4		6000		
15.9	229	1.3	88.1		6375		
11.9	279	1	117.5	PC071+NMRV075	7017	43	
18.7	205.4	1.2	75		6000		
15.6	230	1.3	90	PC080+NMRV075	6375	44	

性能參數表 Performance

P1 (kW)	n2 (1/min)	M2 (Nm)	f.s.	i	減速機型號 Type	Fr2 (N)	頁碼 Page		
0.55	11.7	284	1	120	PC080+NMRV075	7017	44		
	9.3	332	0.8	150		7380			
	17.5	189.1	1.5	80	NMRV090	6783		30	
	14	221	1.2	100		7306			
	15.6	239.7	2.3	90	PC080+NMRV090	7054		44	
	11.7	297	1.6	120		7764			
	9.3	355	1.3	150		8180			
	7.8	398	1	180		8180			
	5.8	477	0.8	240		8180			
	17.5	201.1	2.6	80	NMRV110	8571		31	
	14	236	2	100		9232			
	7.8	425.5	1.8	180	PC080+NMRV110	10320		44	
	5.8	513	1.3	240		10320			
	4.7	597	1	300		10320			
	4.7	638.9	2	300		10320			
	3.5	826	1.4	400	NMRV050/110	10320		50	
	2.8	984	1.1	500		10320			
	2.3	1181	1	600		10320			
1.9	1411	0.9	750	10320					
2.8	995.5	1.6	500	13500					
1.9	1471	1.2	750	NMRV063/130	13500	50			
1.2	2132	0.8	1200		13500				
0.75	280	22.8	2.7	5	NMRV050	1577	27		
	186.7	34	2.1	7.5		1805			
	140	44	1.6	10		1987			
	93.3	63	1.2	15		2274			
	70	81	0.9	20		2503			
	93.3	63.7	2.2	15		NMRV063		2973	28
	70	83	1.6	20	3272				
	56	100	1.3	25	3524				
	46.7	114	1.4	30	3745				
	35	143	1	40	4122				
	56	102.3	2	25	NMRV075		4160	29	
	46.7	117	2	30		4421			
	35	147	1.5	40		4865			
	28	177	1.2	50		5241			
	23.3	200	1	60		5569			
	18.7	280.1	0.9	75		PC080+NMRV075	6000		44
	15.6	313	1	90	6375				
	28	184.2	1.8	50	NMRV090	5799	30		
	23.3	212	1.5	60		6163			
	17.5	258	1.1	80		6783			
	14	302	0.9	100		7306			
	15.6	326.9	1.7	90		PC080+NMRV090		7054	44
	11.7	405	1.2	120	7764				
	9.3	483	0.9	150	8180				
	7.8	543	0.7	180	8180				
	17.5	274.2	1.9	80	NMRV110		8571	31	
	14	322	1.5	100		9232			
	11.7	429.8	2.2	120	PC080+NMRV110	9811	44		
	9.3	506	1.7	150		10320			
	7.8	580	1.3	180		10320			
	5.8	700	0.9	240		10320			
	4.7	871.2	1.5	300		NMRV050/110		10320	50
	3.5	1126	1.1	400				10320	
5.8	712.2	1.4	240	PC080+NMRV130	13500	44			
4.7	813	1.1	300		13500				
2.8	1357.5	1.1	500	NMRV063/130	13500	50			

性能參數表 Performance

P1 (kW)	n2 (1/min)	M2 (Nm)	f.s.	i	減速機型號 Type	Fr2 (N)	頁碼 Page	
0.75	2.3	1631	1	600		13500		
	1.9	2005	0.9	750	NMRV063/130	13500	50	
	1.6	2283	0.8	900		13500		
1.1	186.7	49.5	2.6	7.5		2359		
	140	65	2	10		2597		
	93.3	93	1.5	15	NMRV063	2973	28	
	70	122	1.1	20		3272		
	56	146	0.9	25		3524		
	46.7	167	1	30		3745		
	93.3	95.7	2.1	15		3509		
	70	123	1.7	20		3862		
	56	150	1.3	25	NMRV075	4160	29	
	46.7	171	1.3	30		4421		
	35	216	1	40		4865		
	35	225.1	1.6	40		5383		
	28	270	1.3	50	NMRV090	5799		30
	23.3	311	1	60		6163		
	28	281.4	2.3	50		7328		
	23.3	324	1.9	60	NMRV110	7787	31	
	17.5	402	1.3	80		8571		
	14	473	1	100		9232		
	19	398	2.5	73.6		8298		
	14.3	515	1.8	98.2		9133		
	11.4	609	1.5	122.7	PC090+NMRV110	9838		44
	9.5	693	1.1	147.3		10320		
	7.1	840	0.8	196.4		10320		
	17.5	408.2	2.1	80		11210		
14	480	1.5	100	NMRV130	12076	32		
19	404	3.5	73.6		10853			
14.3	515	2.6	98.2		11945			
11.4	619	2	122.7		12868			
9.5	693	1.6	147.3	PC090+NMRV130	13500	44		
7.1	855	1.2	196.4		13500			
5.7	978	0.9	245.5		13500			
4.7	1312.1	1.3	300		13500			
3.5	1671	1	400	NMRV063/130	13500		50	
2.8	1991	0.8	500		13500			
1.5	186.7	67.5	1.9	7.5		2359		
	140	89	1.5	10		2597		
	93.3	127	1.1	15	NMRV063	2973	28	
	70	166	0.8	20		3272		
	140	90	2.2	10		3065		
	93.3	130	1.5	15		3509		
	70	168	1.3	20	NMRV075	3862		29
	56	205	1	25		4160		
	46.7	233	1	30		4421		
	70	171.9	2.1	20		4273		
	56	210	1.6	25		4603		
	46.7	239	1.7	30		4891		
	35	307	1.2	40	NMRV090	5383	30	
	28	368	0.9	50		5799		
	23.3	424	0.8	60		6163		
	35	319.2	2.2	40		6803		
	28	384	1.7	50		7328		
	23.3	442	1.4	60	NMRV110	7787		31
	17.5	548	0.9	80		8571		
	19	543	1.9	73.6		8298		
	14.3	703	1.3	98.2	PC090+NMRV110	9133	44	

性能參數表 Performance

P1 (kW)	n2 (1/min)	M2 (Nm)	f.s.	i	減速機型號 Type	Fr2 (N)	頁碼 Page
1.5	11.4	831	1.1	122.7	PC090+NMRV110	9838	44
	9.5	946	0.8	147.3		10320	
	17.5	556.6	1.5	80	NMRV130	11210	32
	14	655	1.1	100		12076	
	19	550	2.6	73.6	PC090+NMRV130	10853	44
	14.3	703	1.9	98.2		11945	
	11.4	845	1.5	122.7		12868	
	9.5	998	1.1	147.3		13500	
	7.1	1165	0.8	196.4		13500	
	4.7	1789.3	1	300	NMRV063/130	13500	50
3.5	2279	0.7	400	13500			
2.2	186.7	100.2	1.8	7.5	NMRV075	2785	29
	140	132	1.5	10		3065	
	93.3	191	1	15		3509	
	186.7	101.3	2.9	7.5	NMRV090	3081	30
	140	134	2.3	10		3391	
	93.3	194	1.9	15		3882	
	70	252	1.4	20		4273	
	56	308	1.1	25		4603	
	46.7	351	1.2	30		4891	
	70	255.1	2.5	20		5399	
	56	315	2.2	25	5816	NMRV110	
	46.7	356	2	30	6181		31
	35	468	1.5	40	6803		
	28	563	1.2	50	7328		
	23.3	648	1	60	7787		
	35	468.2	2.2	40	8897	NMRV130	
	28	563	1.7	50	9584		
	23.3	648	1.4	60	10185		
	17.5	816	1	80	11210		
	28	570	2.5	50	13103	NMRV150	33
23.3	657	1.9	60	13924			
17.5	816	1.4	80	15325			
14	960	1	100	16508			
3	186.7	136.6	1.4	7.5	NMRV075	2785	29
	140	180	1.1	10		3065	
	93.3	261	0.8	15		3509	
	186.7	138.1	2.1	7.5	NMRV090	3081	30
	140	182	1.7	10		3391	
	93.3	264	1.4	15		3882	
	70	344	1	20		4273	
	56	420	0.8	25		4603	
	46.7	479	0.9	30		4891	
	93.3	264	2.5	15		4905	
	70	348	1.9	20	5399		
	56	430	1.6	25	5816		
	46.7	485	1.5	30	6181		
	35	638	1.1	40	6803		
	28	767	0.9	50	7328	NMRV130	32
	56	429.8	2.2	25	7607		
	46.7	491	2.1	30	8084		
	35	638	1.6	40	8897		
	28	767	1.3	50	9584		
	23.3	884	1	60	10185		
17.5	1113	0.8	80	11210			
28	778	1.8	50	13103	NMRV150	33	
23.3	896	1.4	60	13924			
17.5	1113	1	80	15325			
14	1310	0.8	100	16508			
4	186.7	184.2	1.6	7.5	NMRV090	3081	30
	140	243	1.3	10		3391	
	93.3	352	1	15		3882	
	70	458	0.8	20	4273	NMRV110	31
	140	242.8	2.5	10	4285		
	93.3	352	1.9	15	4905		
70	464	1.4	20	5399			

性能參數表 Performance

P1 (kW)	n2 (1/min)	M2 (Nm)	f.s.	i	減速機型號 Type	Fr2 (N)	頁碼 Page
4	56	573	1.2	25	NMRV110	5816	31
	46.7	647	1.1	30		6181	
	56	573	1.6	25		7607	
	46.7	655	1.6	30	NMRV130	8084	
	35	851	1.2	40		8897	
	28	1023	1	50		9584	
	23.3	1179	0.8	60	NMRV150	10185	
	28	1037	1.4	50		13103	
	23.3	1195	1.1	60		13924	
17.5	1484	0.8	80		15325		
4.8	186.7	221	1.3	7.5	NMRV090	3081	30
	140	291	1.1	10		3391	
	93.3	422	0.9	15		3882	
	186.7	221	2.5	7.5	NMRV110	3893	
	140	291	2.1	10		4285	
	93.3	422	1.6	15		4905	
	70	557	1.2	20	NMRV130	5399	
	56	688	1	25		5816	
	56	687.6	1.4	25		7607	
	46.7	786	1.3	30	NMRV150	8084	
	35	1022	1	40		8897	
	28	1228	0.8	50		9584	
	28	1244	1.1	50	NMRV150	13103	
	23.3	1434	0.9	60		13924	
	186.7	253.2	2.2	7.5		NMRV110	
	140	334	1.8	10	4285		
	93.3	484	1.4	15	4905		
	70	638	1	20	NMRV130	5399	
140	333.9	2.5	10	5605			
93.3	490	1.9	15	6416			
70	645	1.4	20	NMRV150	7062		
56	788	1.2	25		7607		
46.7	900	1.2	30		8084		
35	1171	0.9	40	NMRV150	8897		
70	645	2	20		9654		
56	788	1.5	25		10400		
46.7	934	1.3	30	NMRV150	11051		
35	1171	1.3	40		12163		
28	1426	1	50		13103		
23.3	1643	0.8	60		13924		
7.5	186.7	345.3	1.6	7.5	NMRV110	3893	31
	140	455	1.3	10		4285	
	93.3	660	1	15		4905	
	186.7	349.2	2.1	7.5	NMRV130	5092	
	140	455	1.8	10		5605	
	93.3	668	1.4	15		6416	
	70	880	1	20	NMRV150	7062	
	56	1074	0.9	25		7607	
	46.7	1228	0.8	30		8084	
	35	1596	0.7	40	NMRV150	8897	
	70	880	1.5	20		9654	
	56	1074	1.1	25		10400	
	46.7	1274	0.9	30	NMRV150	11051	
	35	1596	1	40		12163	
	186.7	423.6	1.3	7.5		NMRV110	
	186.7	428.3	1.8	7.5	5092		
	140	559	1.5	10	5605		
	93.3	819	1.1	15	NMRV130	6416	
70	1079	0.8	20	7062			
56	1318	0.7	25	7607			
70	1079	1.2	20	NMRV150	9654		
56	1318	0.9	25		10400		
46.7	1563	0.8	30		11051		
35	1958	0.8	40		12163		
11	186.7	512	2.3	7.5	NMRV150	6962	33
	140	675	1.8	10		7663	
	93.3	990	1.3	15		8771	
	70	1291	1	20		9654	
	56	1576	0.8	25		10400	
	186.7	698	1.7	7.5		NMRV150	
140	921	1.3	10	7663			
93.3	1351	0.9	15	8771			
70	1760	0.7	20	9654			

NRV 性能參數表 NRV Performance

(n1=1400)

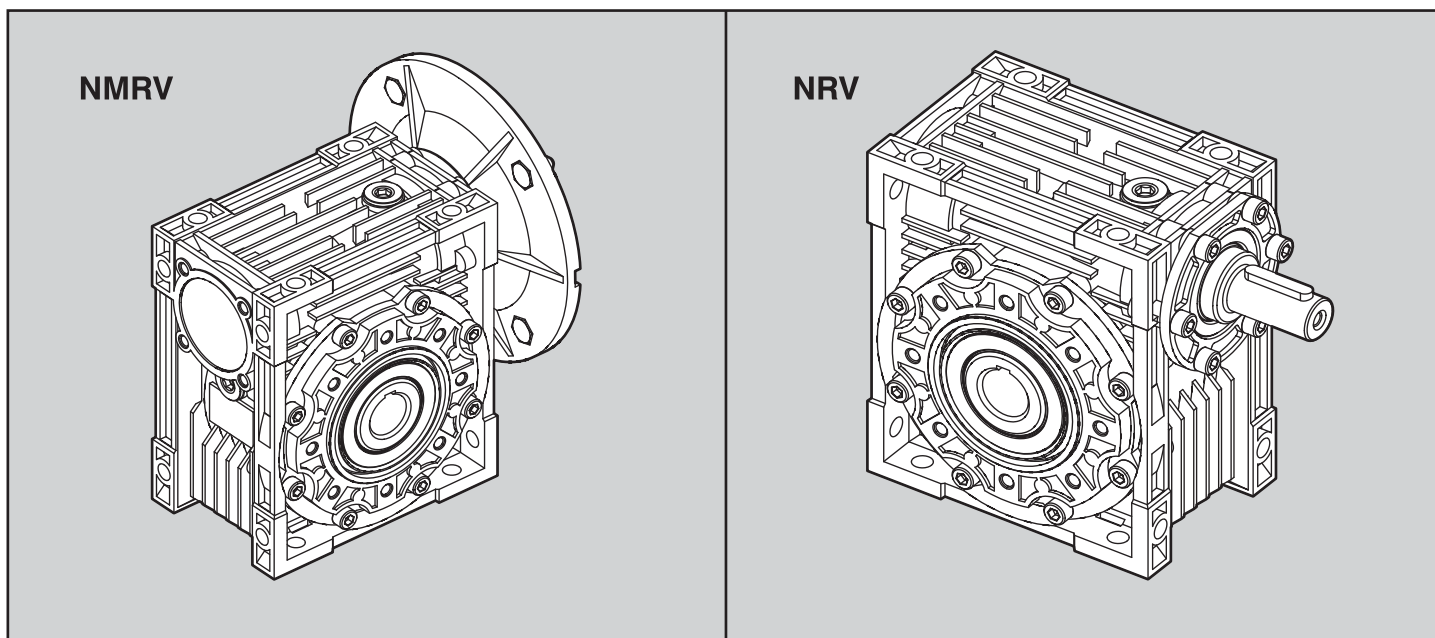
M2 (Nm)	i	P1 (KW)	n2 (1/min)	減速機型號 Type	Fr2 (N)	Fr1 (N)	頁碼 Page
18	5	0.6	280		597	150	
18	7.5	0.4	186.7		683	150	
18	10	0.3	140		752	169	
18	15	0.2	93.3		861	169	
18	20	0.2	70		948	190	
21	25	0.2	56	NRV030	1021	210	25
20	30	0.2	46.7		1085	210	
18	40	0.1	35		1194	210	
17	50	0.1	28		1286	210	
16	60	0.1	23.3		1367	210	
13	80	0.1	17.5		1504	210	
34	5	1.1	280		1149	250	
40	7.5	0.9	186.7		1315	294	
40	10	0.7	140		1447	331	
40	15	0.5	93.3		1657	331	
39	20	0.4	70		1824	350	
38	25	0.3	56	NRV040	1964	350	26
45	30	0.3	46.7		2087	350	
41	40	0.2	35		2298	350	
39	50	0.2	28		2475	350	
36	60	0.2	23.3		2630	350	
33	80	0.1	17.5		2895	350	
29	100	0.1	14		3118	350	
62	5	2	280		1577	350	
71	7.5	1.6	186.7		1805	401	
72	10	1.2	140		1987	490	
74	15	0.9	93.3		2274	490	
73	20	0.7	70		2503	490	
70	25	0.5	56	NRV050	2696	490	27
84	30	0.6	46.7		2865	490	
76	40	0.4	35		3153	490	
73	50	0.3	28		3397	490	
68	60	0.3	23.3		3610	490	
65	80	0.2	17.5		3973	490	
55	100	0.2	14		4280	490	
128	7.5	2.8	186.7		2359	500	
130	10	2.2	140		2597	571	
140	15	1.6	93.3		2973	615	
135	20	1.2	70		3272	667	
130	25	1	56		3524	700	
160	30	1.1	46.7	NRV063	3745	700	28
145	40	0.8	35		4122	700	
135	50	0.6	28		4440	700	
130	60	0.5	23.3		4719	700	
122	80	0.4	17.5		5193	700	
118	100	0.3	14		5595	700	
185	7.5	4.1	186.7		2785	700	
195	10	3.2	140		3065	830	
200	15	2.3	93.3		3509	851	
210	20	1.9	70		3862	980	
200	25	1.5	56		4160	980	
230	30	1.5	46.7	NRV075	4421	980	29
220	40	1.1	35		4865	980	
210	50	0.9	28		5241	980	
200	60	0.8	23.3		5569	980	
190	80	0.6	17.5		6130	980	
180	100	0.5	14		6603	980	

NRV 性能參數表 NRV Performance

(n1=1400)

M2 (Nm)	i	P1 (KW)	n2 (1/min)		Fr2 (N)	Fr1 (N)	
290	7.5	6.3	186.7		3081	900	
310	10	5.1	140		3391	1082	
360	15	4.1	93.3		3882	1257	
355	20	3.1	70		4273	1270	
340	25	2.4	56		4603	1270	
410	30	2.6	46.7	NRV090	4891	1270	30
360	40	1.8	35		5383	1270	
340	50	1.4	28		5799	1270	
320	60	1.1	23.3		6163	1270	
285	80	0.8	17.5		6783	1270	
270	100	0.7	14		7306	1270	
552	7.5	12	186.7		3893	1200	
598	10	9.8	140		4285	1463	
656	15	7.5	93.3		4905	1604	
644	20	5.6	70		5399	1700	
679	25	4.7	56		5816	1700	
725	30	4.5	46.7	NRV110	6181	1700	31
702	40	3.3	35		6803	1700	
660	50	2.6	28		7328	1700	
616	60	2.1	23.3		7787	1700	
515	80	1.4	17.5		8571	1700	
483	100	1.1	14		9232	1700	
750	7.5	16.1	186.7		5092	1500	
820	10	13.5	140		5605	1845	
920	15	10.3	93.3		6416	2070	
910	20	7.8	70		7062	2100	
930	25	6.5	56		7607	2100	
1040	30	6.4	46.7	NRV130	8084	2100	32
1050	40	4.9	35		8897	2100	
980	50	3.8	28		9584	2100	
900	60	3.1	23.3		10185	2100	
840	80	2.3	17.5		11210	2100	
740	100	1.7	14		12076	2100	
1200	7.5	25.8	186.7		6962	1950	
1240	10	20.2	140		7663	2267	
1250	15	13.9	93.3		8771	2285	
1300	20	11.1	70		9654	2674	
1200	25	8.4	56		10400	2800	
1200	30	7.1	46.7	NRV150	11051	2800	33
1550	40	7.3	35		12163	2800	
1400	50	5.4	28		13103	2800	
1260	60	4.2	23.3		13924	2800	
1150	80	3.1	17.5		15325	2800	
1000	100	2.3	14		16508	2800	

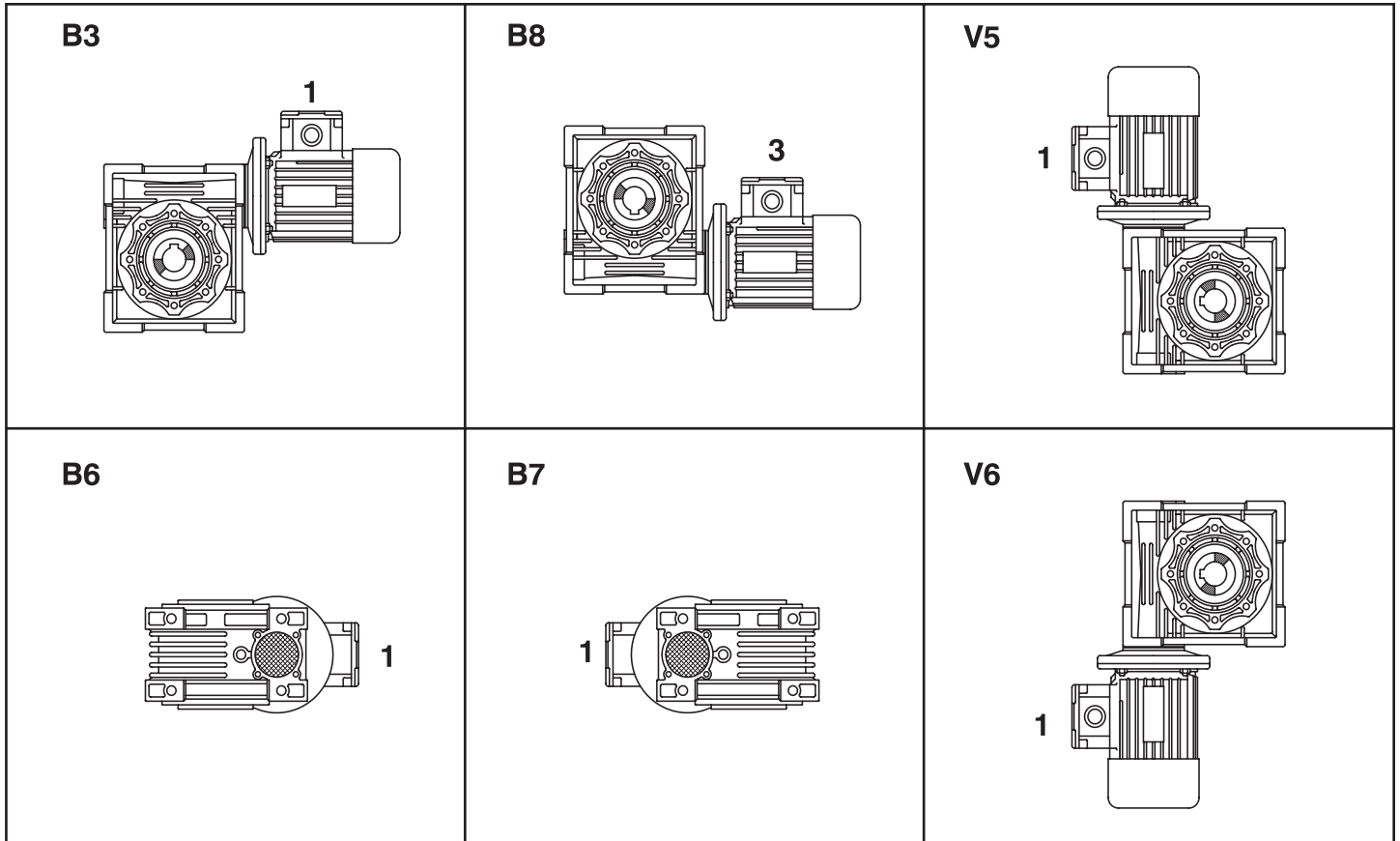
NMRV / NRV



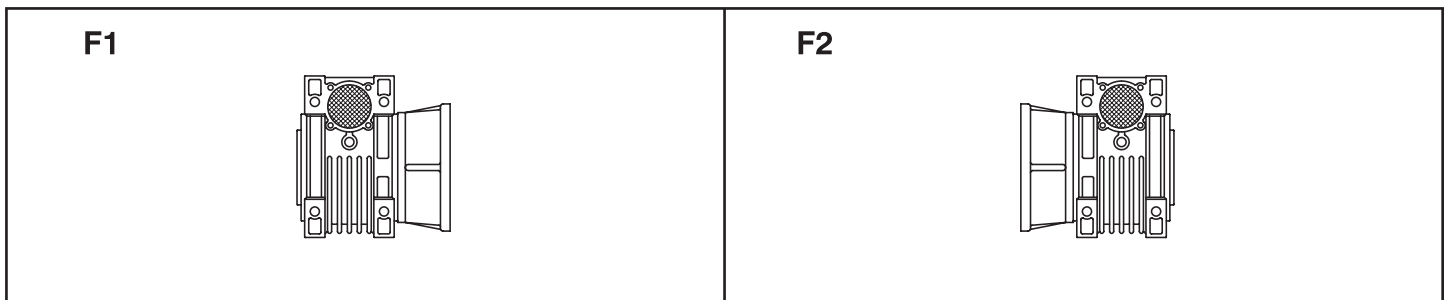
NMRV型號標記 NMRV Model & marker

NMRV-063-30-VS-F1(FA)-AS-80B5-0.75kW-B3			
NMRV	蝸輪減速機 Worm geared motor	PAM	馬達連接盤 Fitted for motor coupling
NRV	蝸輪減速機 (配接輸入軸) Worm reduction unit	0.75kW	馬達功率 Electric motor power
063	蝸輪減速機中心距 Center distance	F1(FA)	輸出法蘭位置及型號 Output flange
30	減速比 Reduction ratio	AB	雙向輸出軸 Double output shaft
VS	雙向輸入軸 Double input shaft	80B5	馬達框號和安裝結構形式 Motor mounting facility
AS	單向輸出軸 Single output shaft	B3	安裝方式 Mounting position

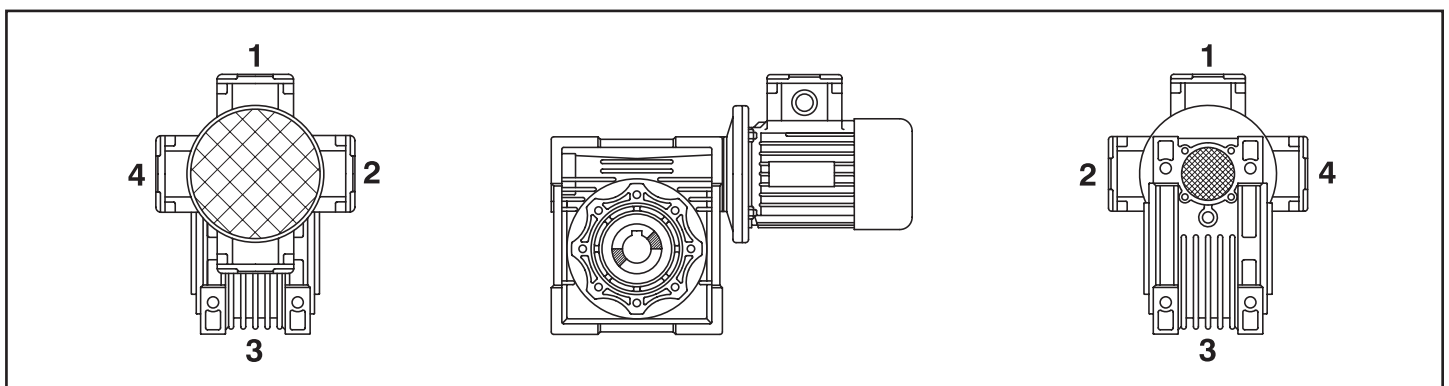
安裝方式 Mounting positions



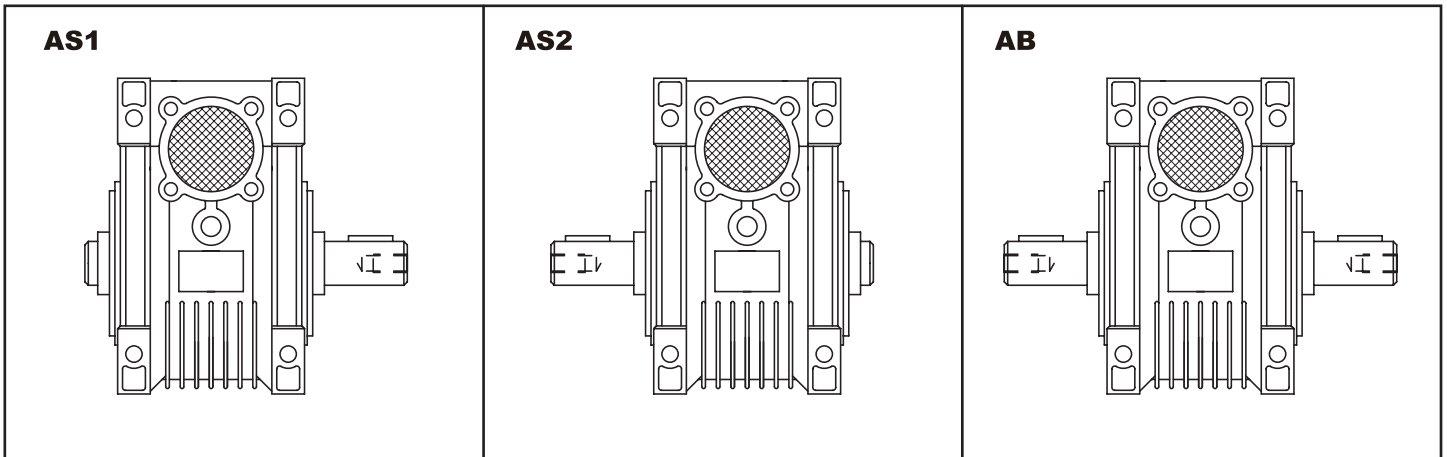
法蘭位置 Flange F-FL



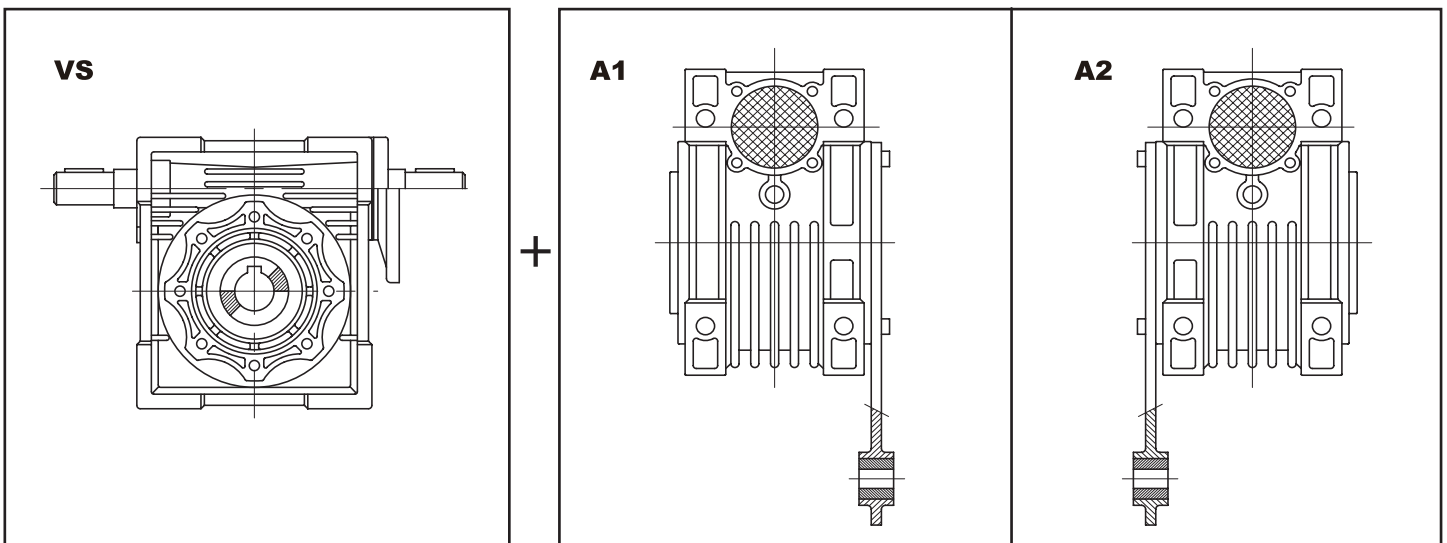
接線盒安裝方式 Pos. of terminal box



輸出軸配置 Pos.of output shaft



雙向輸入軸 Double extension + 扭力臂配置 Pos.of torque arm

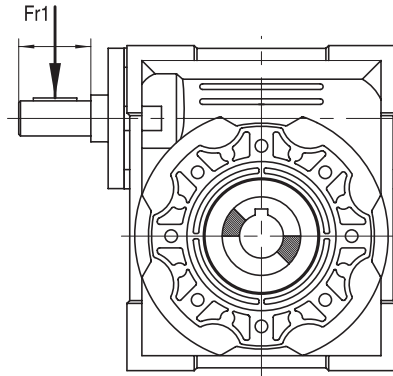


潤滑油的選用 Choice of lubricant

油量 (公升) Q.ty of oil in litres										
NMRV	025	030	040	050	063	075	090	110	130	150
B3								3	4.5	7
B8								2.2	3.3	5.1
B6-B7	0.02	0.04	0.08	0.15	0.30	0.55	1.00	2.5	3.5	5.4
V5								3	4.5	7
V6								2.2	3.3	5.1

	NMRV 025-090	NMRV 110-150
	Synthetic oil	Mineral oil
AGIP	TELIUM VSF 320	BLASIA 460
SHELL	TIVELA OIL S320	OMALA OIL460
ESSO	S220	SPARTAN EP460
MOBIL	GLYGOYLE 30	MOBILGEAR 634
CASTROL	ALPHASYN PG320	ALPHA MAX 460
BP	ENERGOL SG-XP320	ENERGOL GR-XP460

輸入軸容許徑向載荷 Applied mid-way along the input

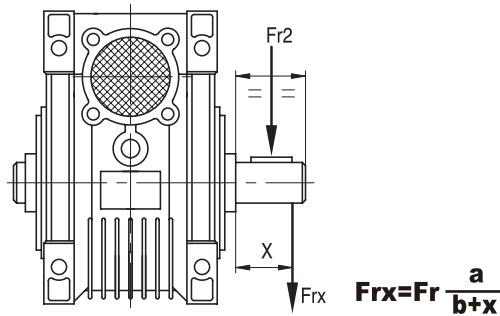


(N)

	NRV030	NRV040	NRV050	NRV063	NRV075	NRV090	NRV110	NRV130
1400	150	250	350	500	700	900	1200	1500
900	175	290	400	580	810	1040	1390	1740
500	210	350	490	700	980	1270	1700	2100

輸出軸容許徑向載荷 Applied mid-way along the output shaft

(N)

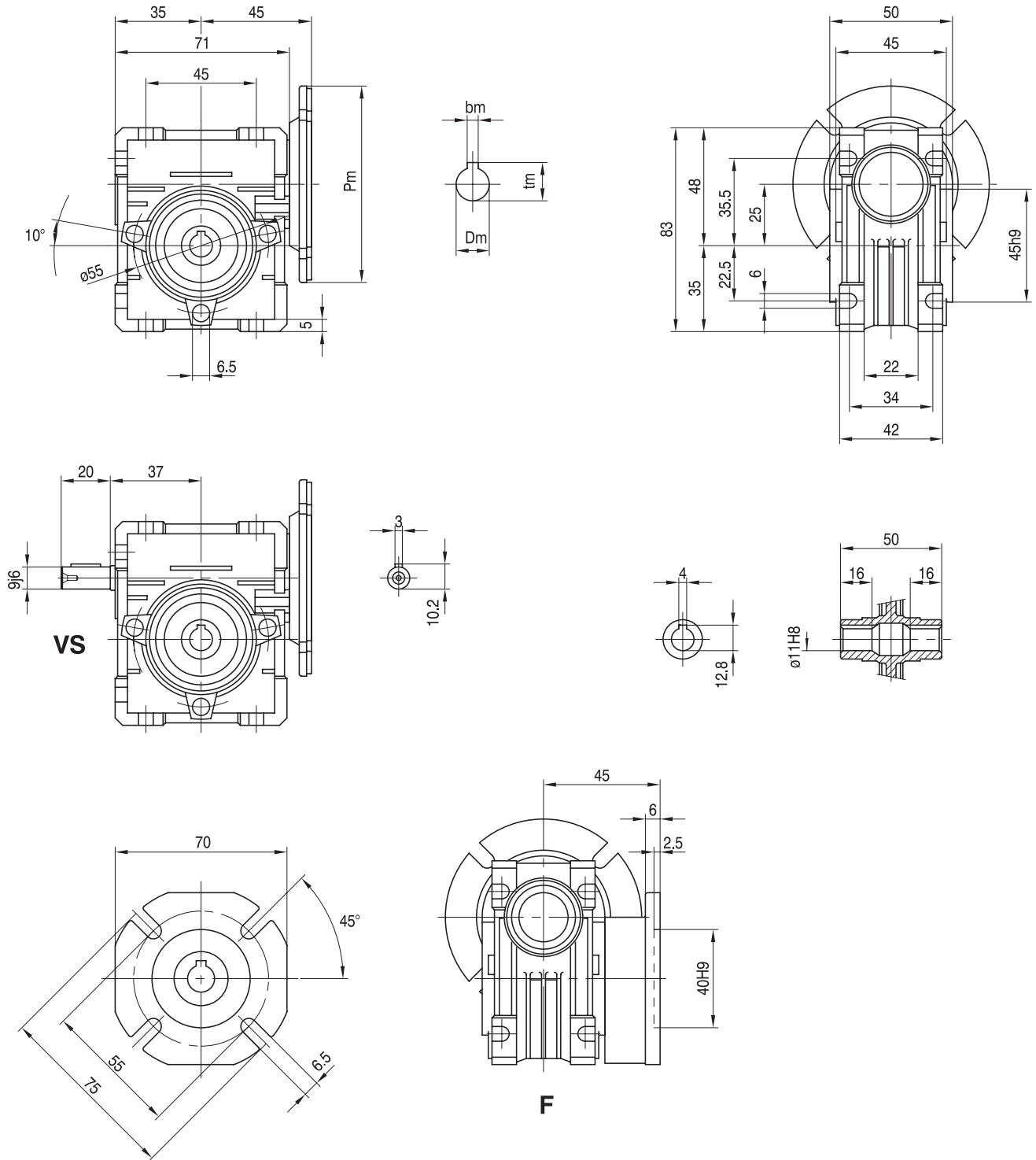


n2	NRV025	NRV030	NRV040	NRV050	NRV063	NRV075	NRV090	NRV110	NRV130
400	390	530	1020	1400	1830	2160	2390	3020	3950
250	460	620	1200	1650	2150	2520	2800	3530	4610
150	550	740	1420	1960	2540	2990	3310	4180	5470
100	630	850	1620	2250	2910	3430	3800	4790	6260
60	740	1000	1920	2660	3450	4060	4500	5680	7420
40	850	1150	2200	3050	3950	4650	5150	6500	8500
25	990	1350	2570	3570	4620	5440	6020	7600	9940
10	1350	1830	3490	4840	6270	7380	8180	10320	13500
a	50	65	84	101	120	131	162	191	203
b	38	50	64	76	95	101	122	151	163

- 表中的數值為作用於出力軸中點的許可載入力
- 當減速機為雙出軸時，折算到軸端的徑向合力不能超過表中規定的數值
- 當徑向力和軸向力同時施加時，最大許可的軸向推力為徑向力的1/5
- Above table is the allowed loading force on the midpoint of output shaft
- When the reducer is with double output shafts, the resultant radial power at the edge of shaft should not exceed the values specified as in above table
- the max allowed axial thrust is 1/5 of radial force while the radial force and axial force effected together

減速機外形尺寸 Dimensions

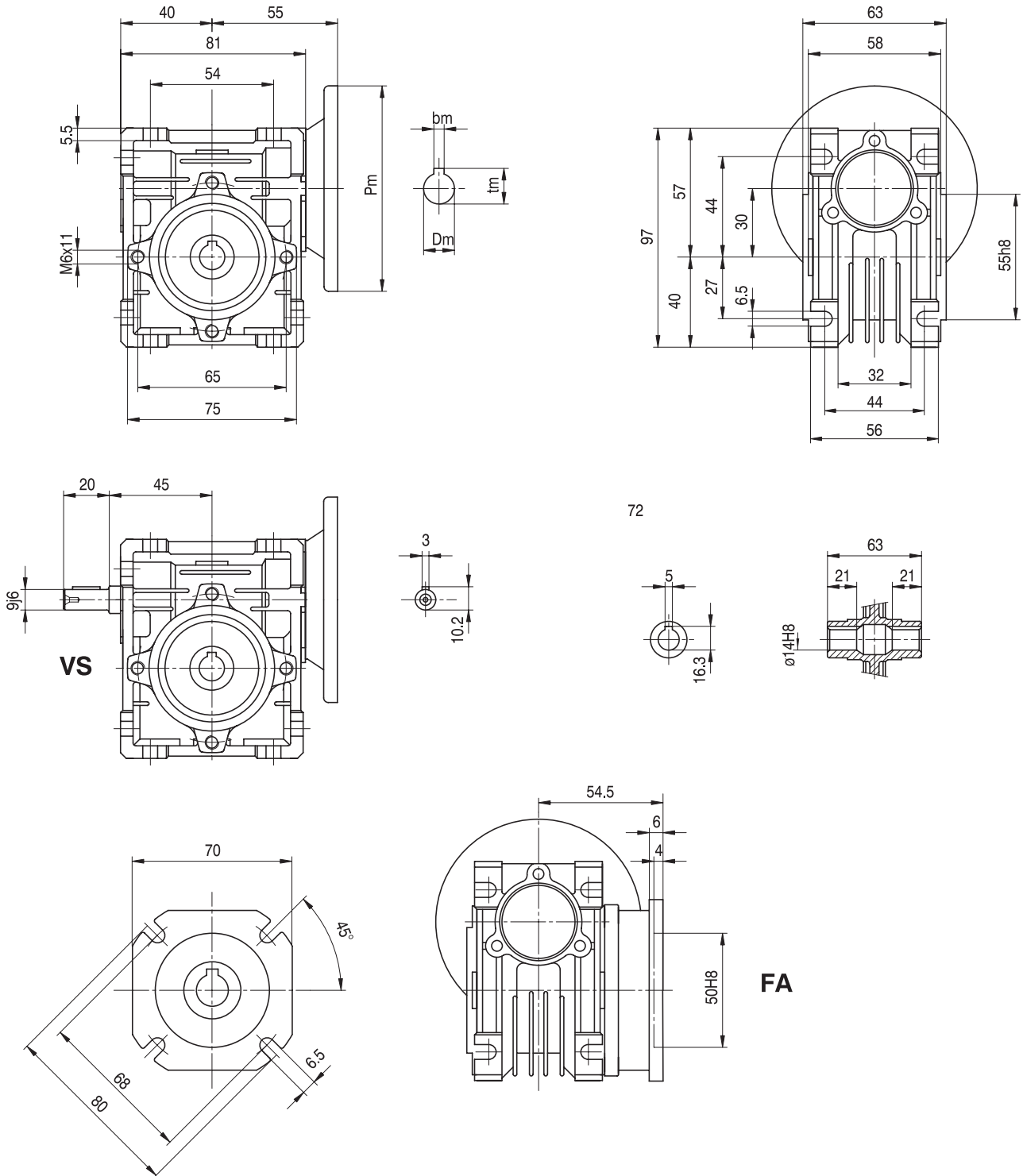
NMRV025



- 不含馬達重量為:0.7kg
- 輸入法蘭尺寸 (Pm,Dm,bm,tm) 參照第53頁圖表
- Weight without motor:0.7kg
- For the dimensions concerning the motor connection area(Pm,Dm,bm,tm)please refer to the table shown at page 53

減速機外形尺寸 Dimensions

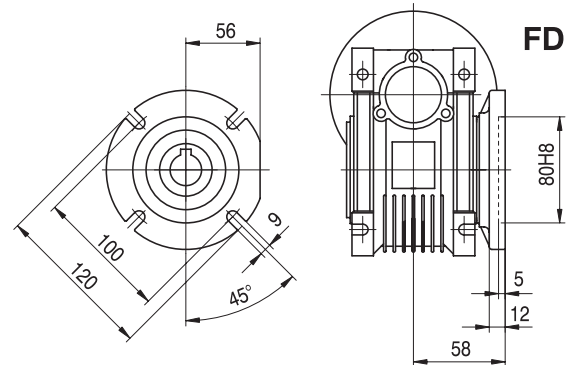
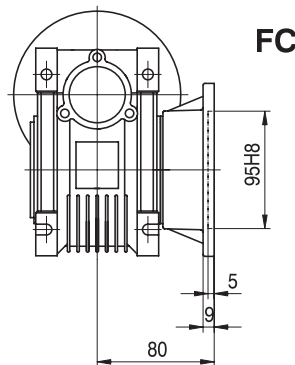
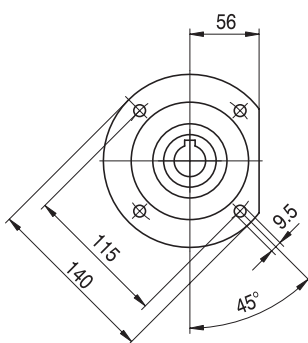
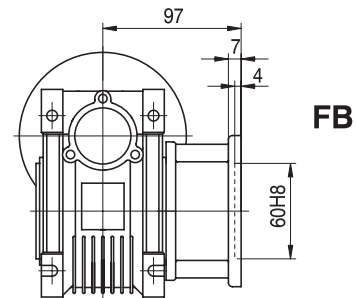
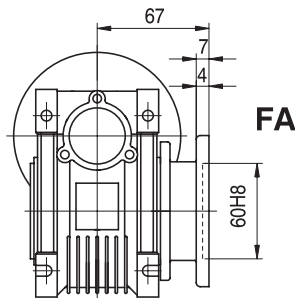
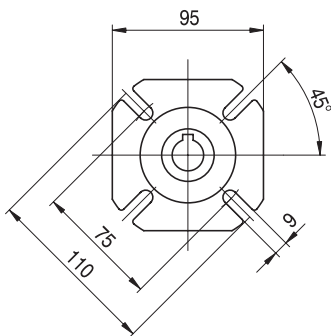
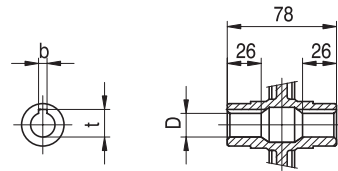
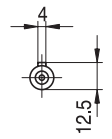
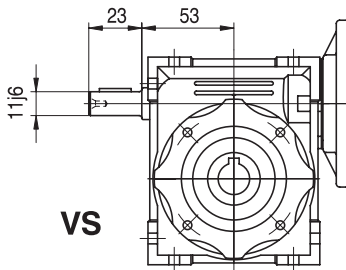
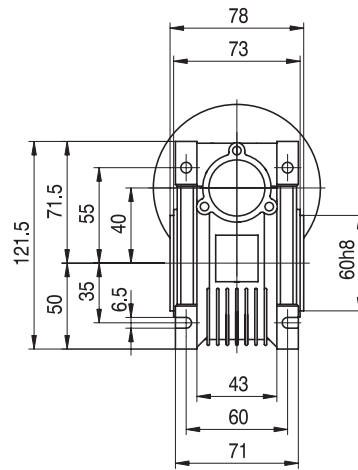
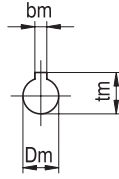
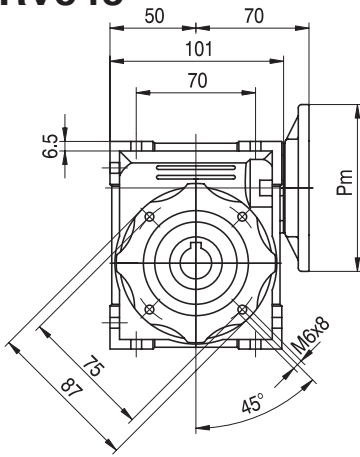
NMRV030



- 不含馬達重量為: 1.2kg
- 輸入法蘭尺寸 (Pm,Dm,bm,tm) 參照第53頁圖表
- Weight without motor: 1.2kg
- For the dimensions concerning the motor connection area(Pm,Dm,bm,tm) please refer to the table shown at page 53

減速機外形尺寸 Dimensions

NMRV040



輸出軸孔徑/Output		
D H8	b	t
18	6	20.8
(19)	(6)	(21.8)

() 根據用戶要求訂製

● 不含馬達重量為:2.3kg

● 輸入法蘭尺寸 (Pm,Dm,bm,tm) 參照第53頁圖表

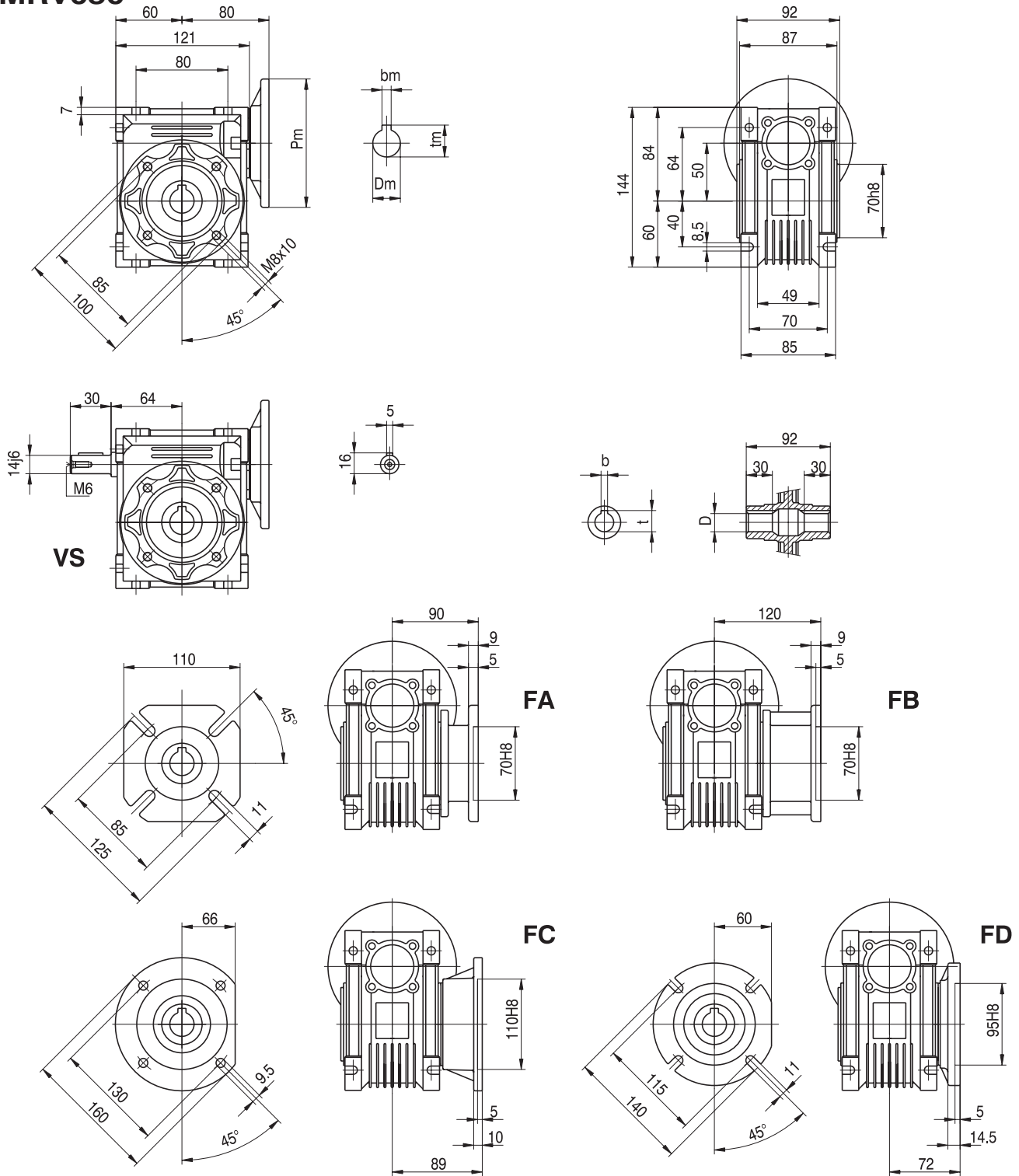
() Only on request

● Weight without motor:2.3kg

● for the dimensions concerning the motor connection area(Pm,Dm,bm,tm)please refer to the table shown at page 53

減速機外形尺寸 Dimensions

NMRV050



輸出軸孔徑/Output		
D H8	b	t
25	8	28.3
(24)	(8)	(27.3)

() 根據用戶要求訂製

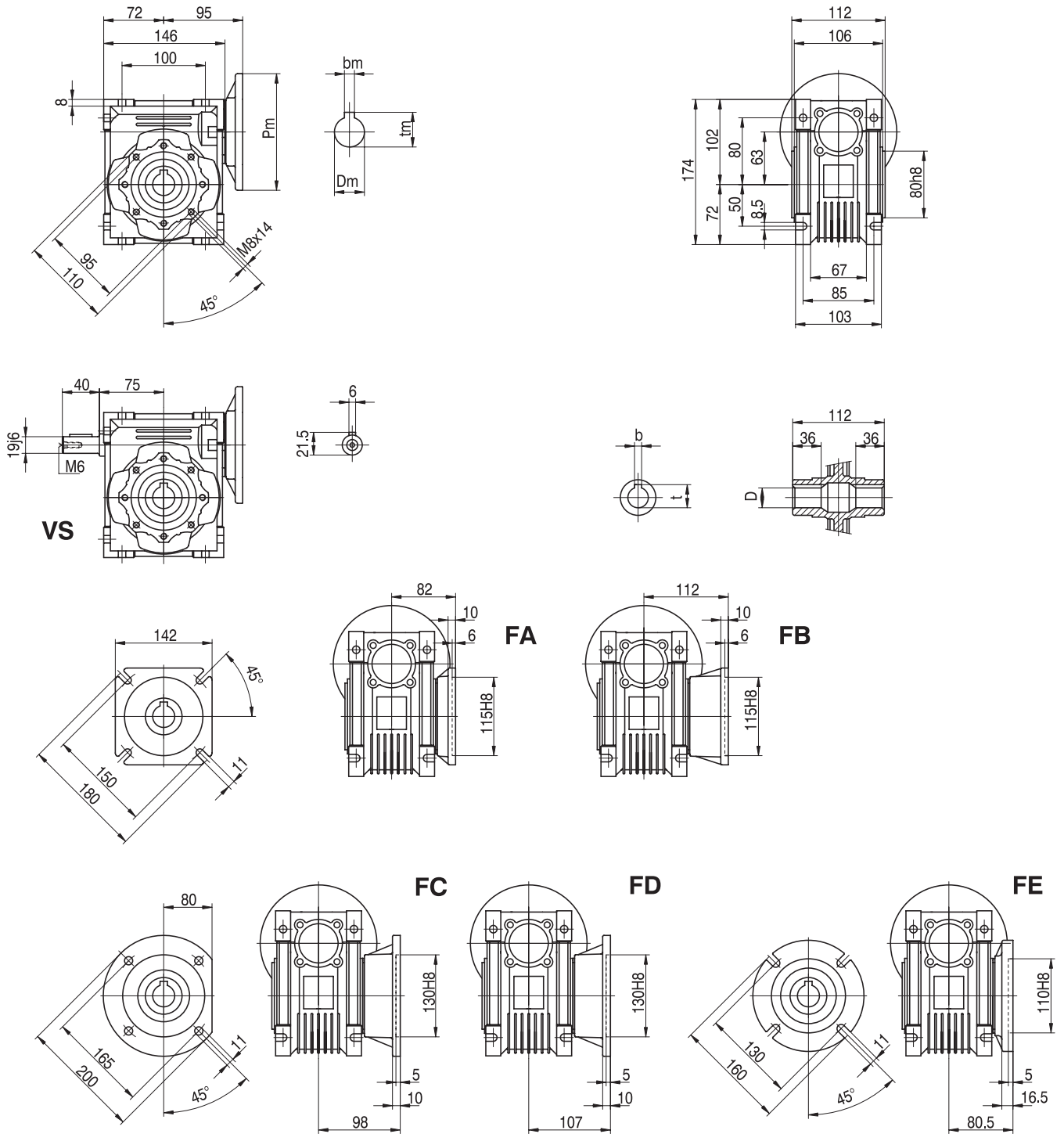
- 不含馬達重量為:3.5kg
- 輸入法蘭尺寸 (Pm,Dm,bm,tm) 參照第53頁圖表

() Only on request

- Weight without motor:3.5kg
- for the dimensions concerning the motor connection area(Pm,Dm,bm,tm)please refer to the table shown at page 53

減速機外形尺寸 Dimensions

NMRV063



() 根據用戶要求訂製

- 不含馬達重量為:6.2kg
- 輸入法蘭尺寸 (Pm,Dm,bm,tm) 參照第53頁圖表

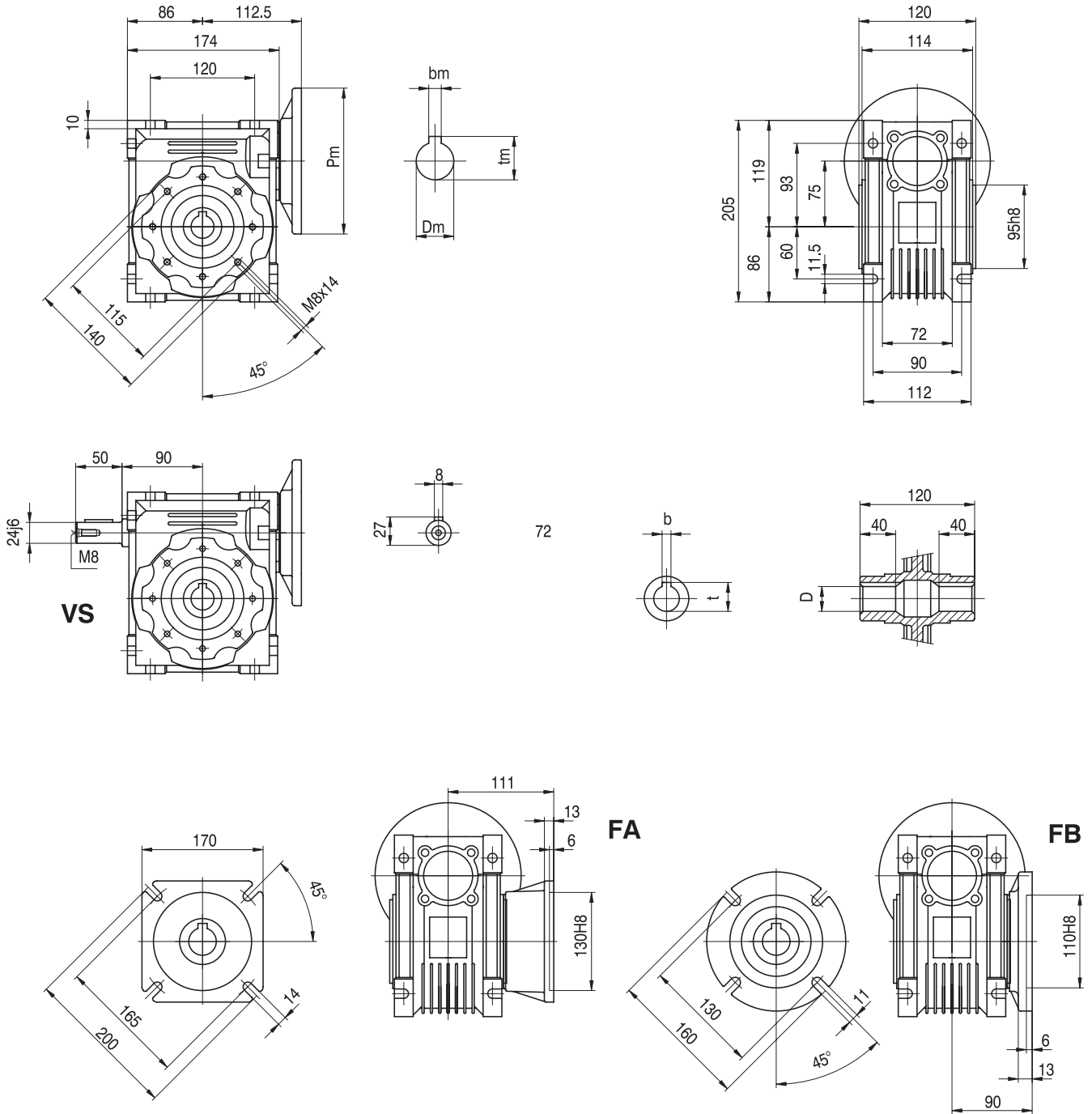
() Only on request

- Weight without motor:6.2kg
- for the dimensions concerning the motor connection area(Pm,Dm,bm,tm)please refer to the table shown at page 53

輸出軸孔徑/Output		
D H8	b	t
25	8	28.3
(28)	(8)	(31.3)

減速機外形尺寸 Dimensions

NMRV075



輸出軸孔徑/Output		
D H8	b	t
28	8	31.3
(35)	(10)	(38.3)

() 根據用戶要求訂製

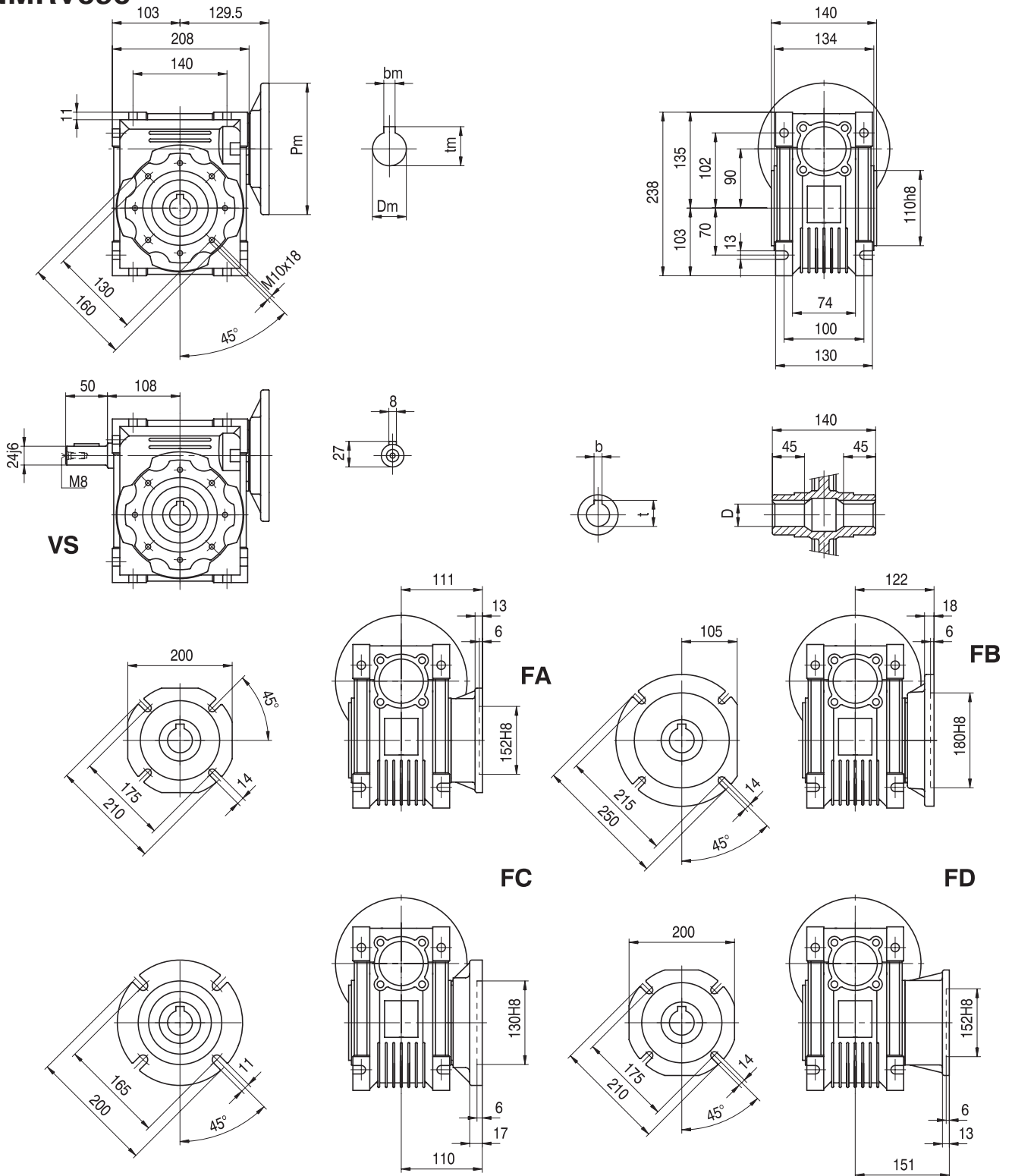
- 不含馬達重量為: 9kg
- 輸入法蘭尺寸 (Pm,Dm,bm,tm) 參照第53頁圖表

() Only on request

- Weight without motor: 9kg
- for the dimensions concerning the motor connection area(Pm,Dm,bm,tm)please refer to the table shown at page 53

減速機外形尺寸 Dimensions

NMRV090



() 根據用戶要求訂製

- 不含馬達重量為:13kg
- 輸入法蘭尺寸 (Pm,Dm,bm,tm) 參照第53頁圖表

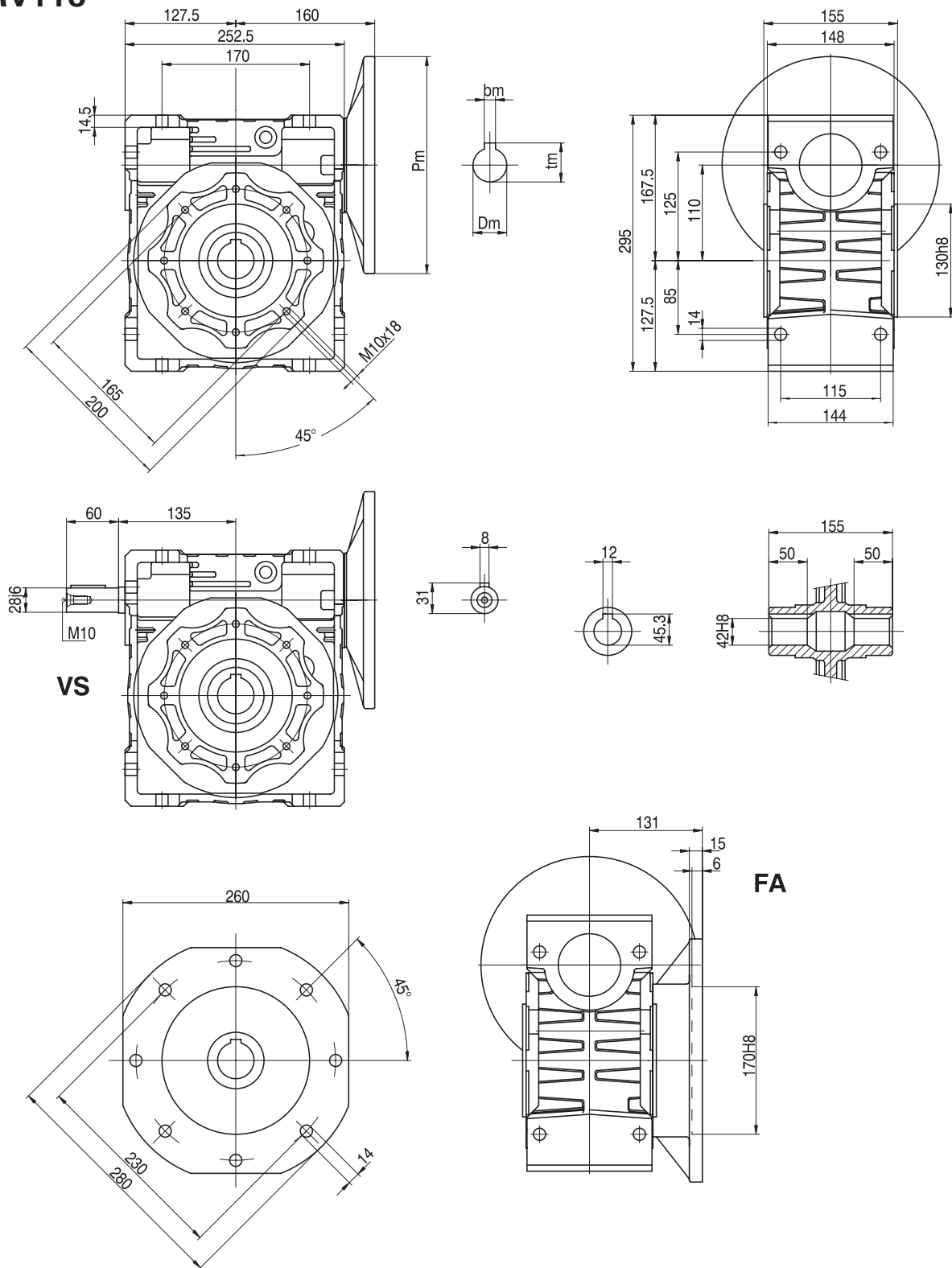
() Only on request

- Weight without motor:13kg
- for the dimensions concerning the motor connection area(Pm,Dm,bm,tm)please refer to the table shown at page 53

輸出軸孔徑/Output		
D H8	b	t
35	10	38.3
(38)	(10)	(41.3)

減速機外形尺寸 Dimensions

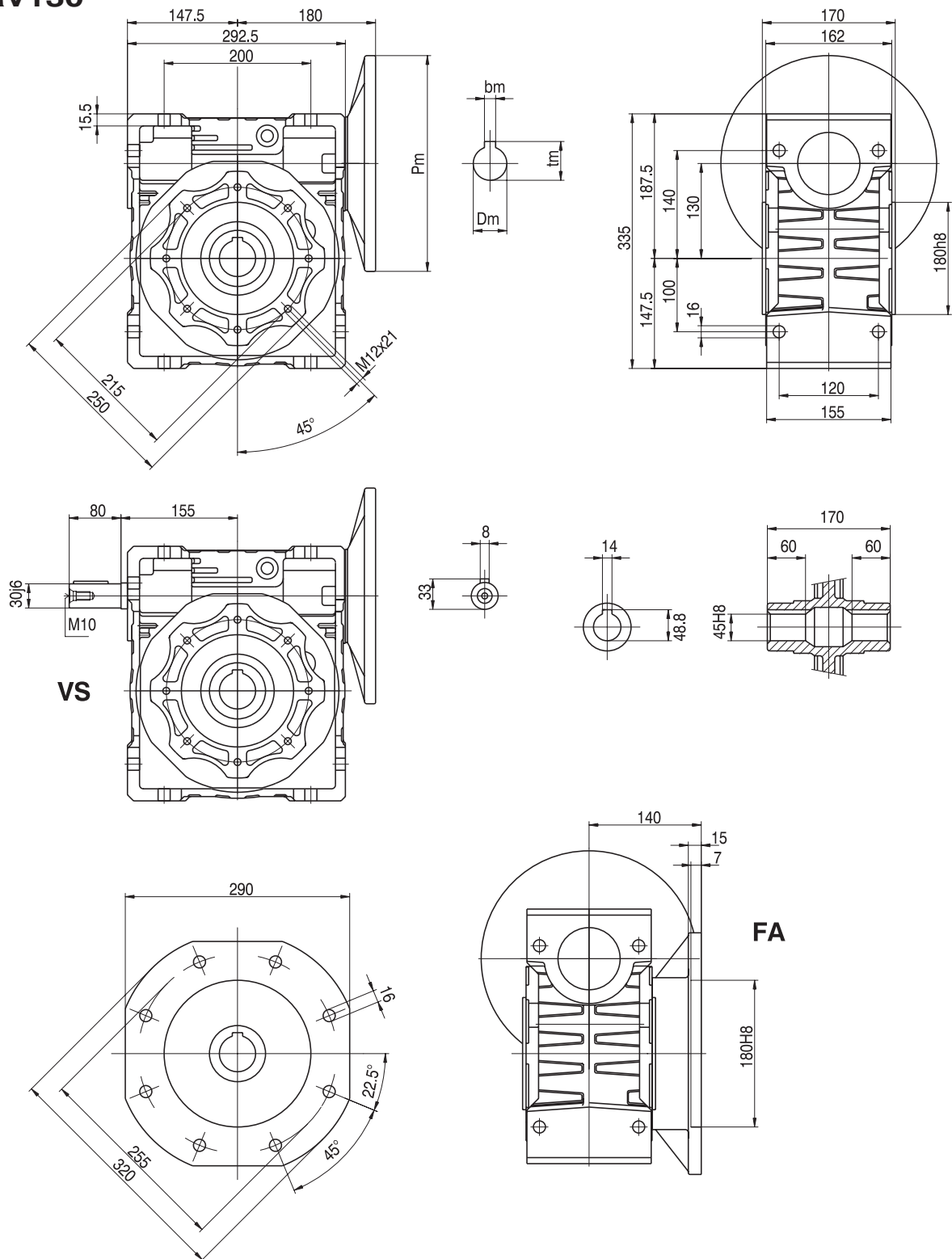
NMRV110



- 不含馬達重量為:35kg
- 輸入法蘭尺寸 (Pm,Dm,bm,tm) 參照第53頁圖表
- Weight without motor:35kg
- For the dimensions concerning the motor connection area(Pm,Dm,bm,tm)please refer to the table shown at page 53

減速機外形尺寸 Dimensions

NMRV130



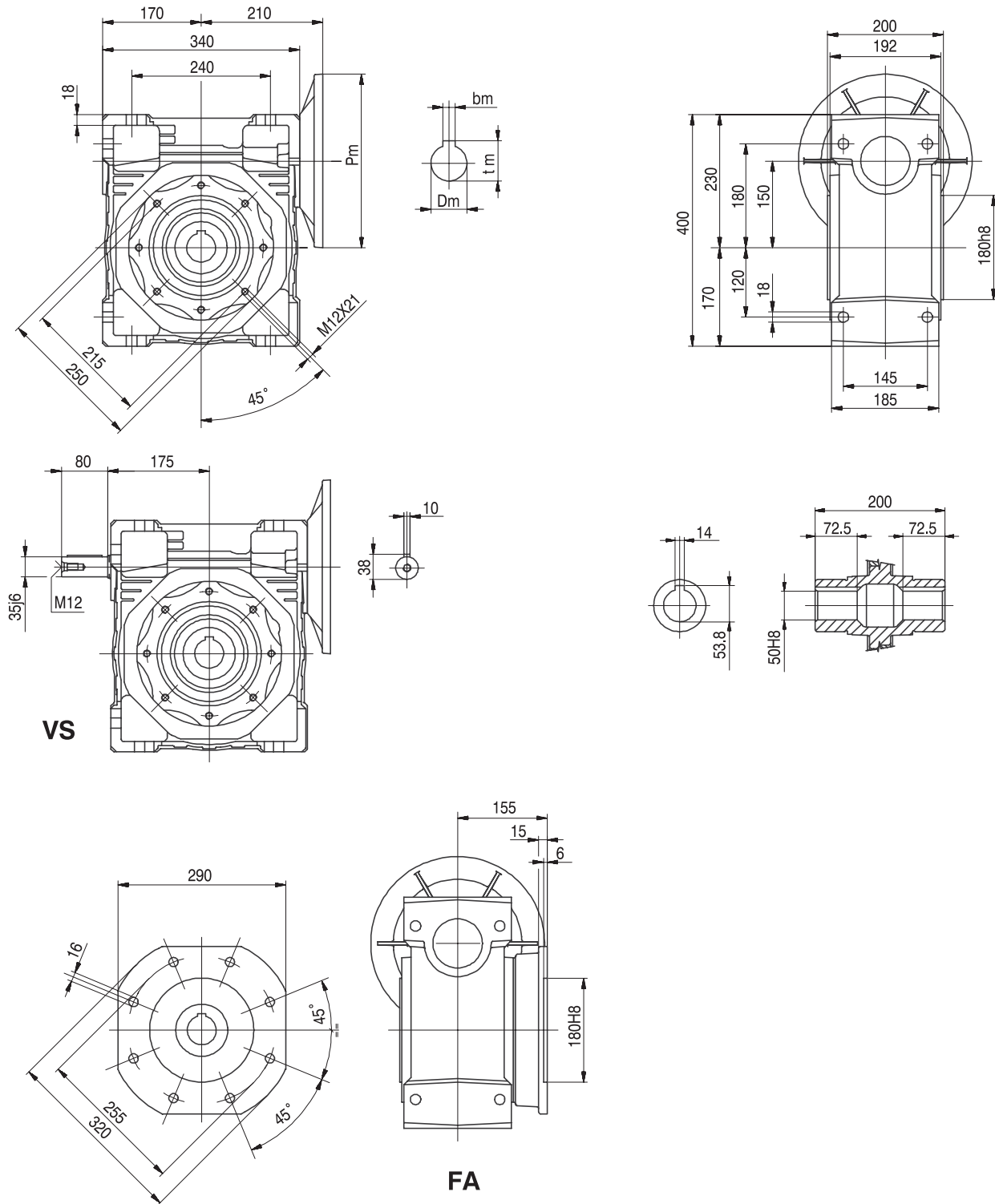
VS

FA

- 不含馬達重量為:48kg
- 輸入法蘭尺寸 (Pm,Dm,bm,tm) 參照第53頁圖表
- Weight without motor:48kg
- For the dimensions concerning the motor connection area(Pm,Dm,bm,tm)please refer to the table shown at page 53

減速機外形尺寸 Dimensions

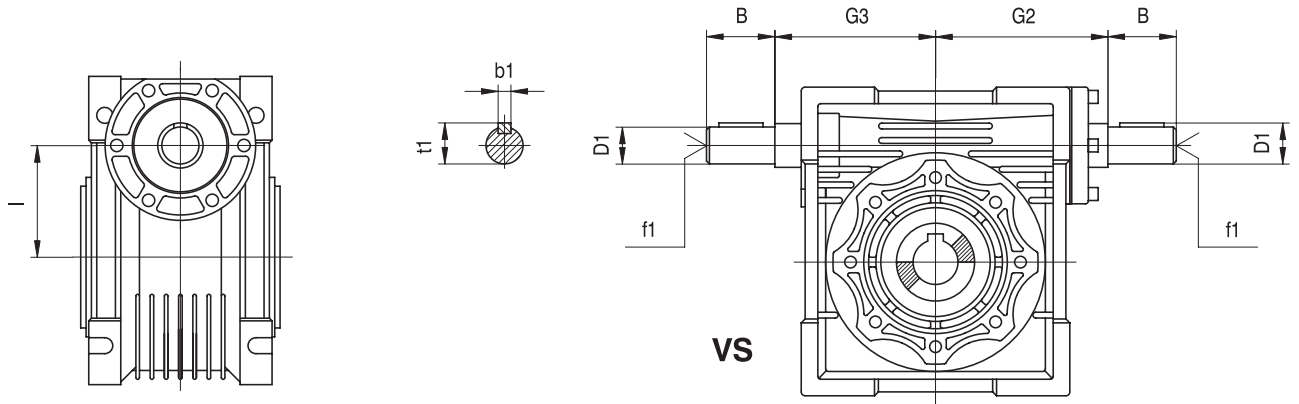
NMRV150



- 不含馬達重量為: 84kg
- 輸入法蘭尺寸 (Pm,Dm,bm,tm) 參照第53頁圖表
- Weight without motor: 84kg
- For the dimensions concerning the motor connection area (Pm,Dm,bm,tm) please refer to the table shown at page 53

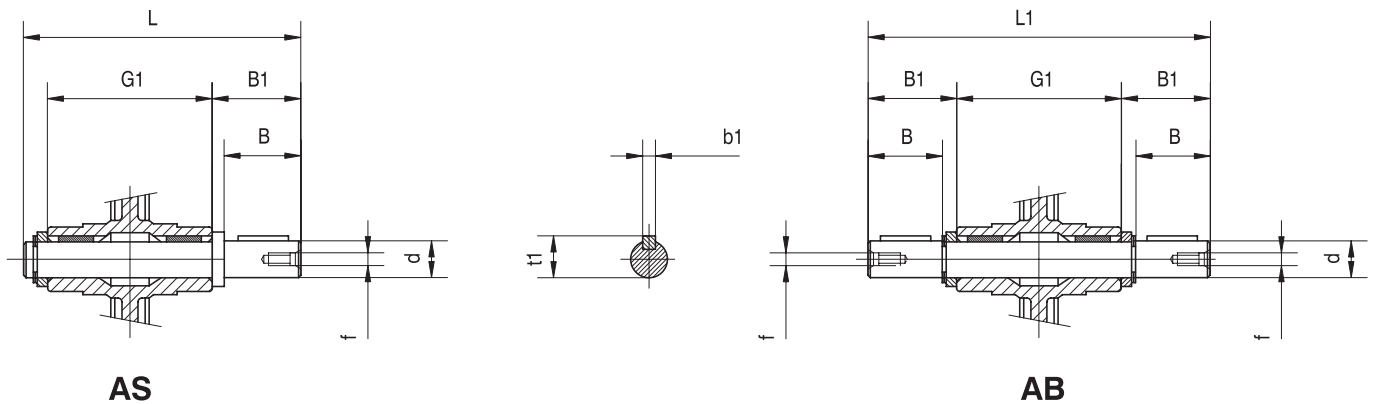
NRV外形尺寸 NRV Dimensions

NRV



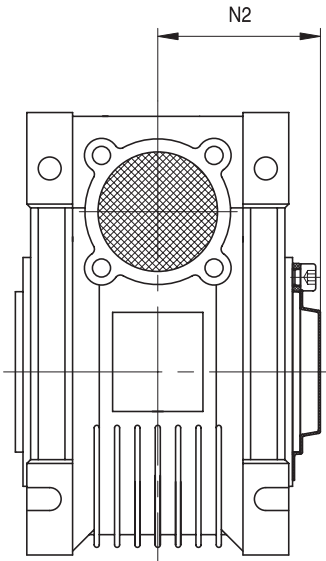
NRV	025	030	040	050	063	075	090	110	130	150
B	20	20	23	30	40	50	50	60	80	80
D1	9 j6	9 j6	11 j6	14 j6	19 j6	24 j6	24 j6	28 j6	30 j6	35 j6
G2	38	51	60	74	90	105	125	142	162	195
G3	37	45	53	64	75	90	108	135	155	175
I	25	30	40	50	63	75	90	110	130	150
b1	3	3	4	5	6	8	8	8	8	10
f1	-	-	-	M6	M6	M8	M8	M10	M10	M12
t1	10.2	10.2	12.5	16	21.5	27	27	31	33	38

輸出軸心外形尺寸 Low speed shafts Dimensions



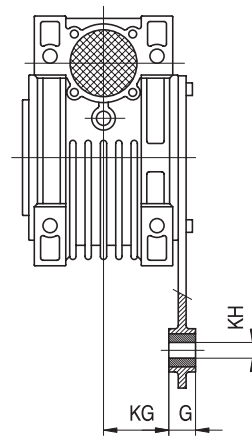
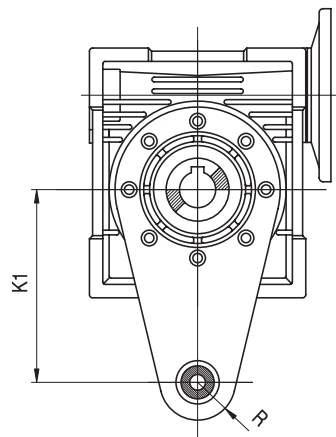
	d	B	B1	G1	L	L1	f	b1	t1
025	11g6 (9)	23 (25)	25.5 (30)	50	81 (85.5)	101	-	4 (3)	12.5 (10.2)
030	14g6	30	32.5	63	102	128	M6	5	16
040	18h6	40	43	78	128	164	M6	6	20.5
050	25h6	50	53.5	92	153	199	M10	8	28
063	25h6	50	53.5	112	173	219	M10	8	28
075	28h6	60	63.5	120	192	247	M10	8	31
090	35h6	80	84.5	140	234	309	M12	10	38
110	42h6	80	84.5	155	249	324	M16	12	45
130	45h6	80	85	170	265	340	M16	14	48.5
150	50h6	82	87	200	297	374	M16	14	53.5

外罩 Cover



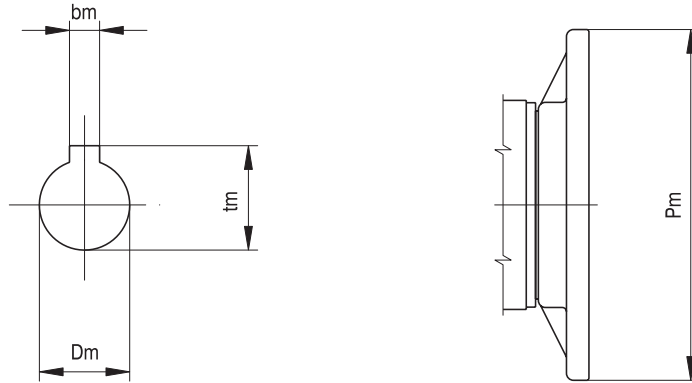
	N2
030	42
040	50
050	58
063	69
075	74
090	86
110	94
130	102
150	113

扭力臂 Torque arm



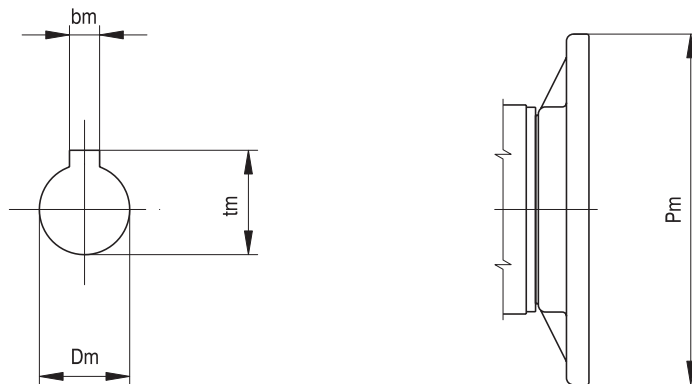
	K1	G	KG	KH	R
025	70	14	17.5	8	15
030	85	14	24	8	15
040	100	14	31.5	10	18
050	100	14	38.5	10	18
063	150	14	49	10	18
075	200	25	47.5	20	30
090	200	25	57.5	20	30
110	250	30	62	25	35
130	250	30	69	25	35
150	250	30	84	25	35

PAM B5外形尺寸 Dimensions



B5	IEC										
	056	063	071	080	090	100	112	132	160	180	200
Pm	120	140	160	200	200	250	250	300	350	350	400
Dm	9	11	14	19	24	28	28	38	42	48	55
bm	3	4	5	6	8	8	8	10	12	14	16
tm	10.4	12.8	16.3	21.8	27.3	31.3	31.3	41.3	45.3	51.8	59.3

PAM B14外形尺寸 Dimensions



B14	IEC								
	056	063	071	080	090	100	112	132	
Pm	80	90	105	120	140	160	160	200	
Dm	9	11	14	19	24	28	28	38	
bm	3	4	5	6	8	8	8	10	
tm	10.4	12.8	16.3	21.8	27.3	31.3	31.3	41.3	